

\$549,800 - 513 173a Street, Edmonton

MLS® #E4462628

\$549,800

3 Bedroom, 2.50 Bathroom, 1,859 sqft
Single Family on 0.00 Acres

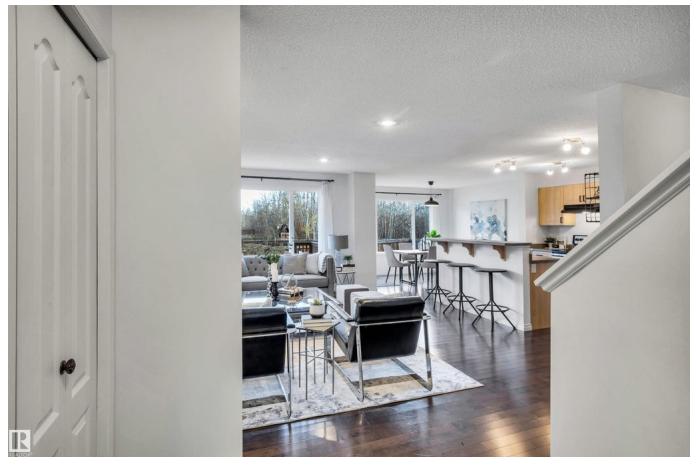
Windermere, Edmonton, AB

Nestled on a quiet cul-de-sac in the desirable Langdale community of Windermere, this beautifully maintained 3-bedroom, 2.5-bathroom 2-storey home with a double attached garage offers the perfect mix of comfort, privacy, and family living. The main floor features an inviting open-concept layout with a bright eat-in kitchen showcasing well-kept cabinetry, a corner pantry, and a raised dining bar. The cozy living room and dining area boast large windows that flood the space with natural light. The large deck with fully fenced backyard backing onto a beautiful tree view, offering a sense of calm and privacy. A convenient powder room and a laundry room with garage access complete the main level. Upstairs, you'll find a bright family room with soaring ceilings and a large window, perfect for family gatherings or a home office. The generous primary suite includes a walk-in closet and a private 4-piece ensuite. Two additional bedrooms and another full 4-piece bath complete the upper level.

Built in 2012

Essential Information

MLS® #	E4462628
Price	\$549,800
Bedrooms	3



Bathrooms	2.50
Full Baths	2
Half Baths	1
Square Footage	1,859
Acres	0.00
Year Built	2012
Type	Single Family
Sub-Type	Detached Single Family
Style	2 Storey
Status	Active

Community Information

Address	513 173a Street
Area	Edmonton
Subdivision	Windermere
City	Edmonton
County	ALBERTA
Province	AB
Postal Code	T6W 2A5

Amenities

Amenities	Deck, Detectors Smoke, Parking-Extra
Parking	Double Garage Attached
Is Waterfront	Yes

Interior

Interior Features	ensuite bathroom
Appliances	Air Conditioning-Central, Dishwasher-Built-In, Dryer, Garage Control, Garage Opener, Hood Fan, Refrigerator, Stove-Electric, Washer
Heating	Forced Air-1, Natural Gas
Stories	2
Has Basement	Yes
Basement	Full, Unfinished

Exterior

Exterior	Wood, Vinyl
Exterior Features	Cul-De-Sac, Golf Nearby, Park/Reserve, Playground Nearby, Shopping Nearby, Stream/Pond
Roof	Asphalt Shingles

Construction Wood, Vinyl
Foundation Concrete Perimeter

Additional Information

Date Listed October 17th, 2025
Days on Market 17
Zoning Zone 56

DATA IS DEEMED RELIABLE BUT IS NOT GUARANTEED ACCURATE BY THE REALTORS® ASSOCIATION OF EDMONTON. COPYRIGHT 2025 BY THE REALTORS® ASSOCIATION OF EDMONTON. ALL RIGHTS RESERVED. Trademarks are owned or controlled by the Canadian Real Estate Association (CREA) and identify real estate professionals who are members of CREA (REALTOR®, REALTORS®) and/or the quality of services they provide (MLS®, Multiple Listing Service®)

Listing information last updated on November 3rd, 2025 at 3:48pm MST