

\$615,000 - 14 Gable Common, Spruce Grove

MLS® #E4454827

\$615,000

3 Bedroom, 2.50 Bathroom, 2,160 sqft

Single Family on 0.00 Acres

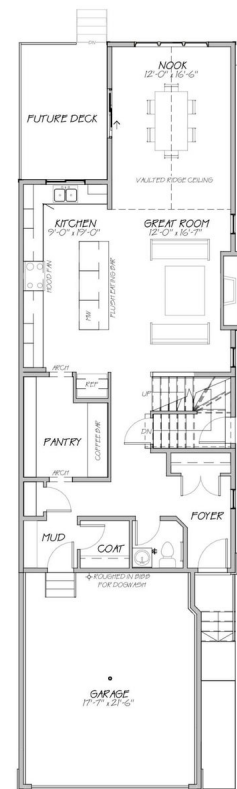
Greenbury, Spruce Grove, AB

Welcome to 14 Gable Common in Spruce Grove! This brand new, never occupied 2,160 sq. ft. 2 storey home is currently being built with possession available soon. Featuring 9 ft ceilings and upgraded finishes throughout, the main floor offers an open concept layout with a bright dining area, large windows, a chef's kitchen with quartz counters, island, and walk through pantry from the mudroom. The living space extends to a rear deck, perfect for entertaining. Upstairs you will find 3 bedrooms, including a spacious primary with a walk in closet complete with MDF shelving and a luxurious ensuite, plus upper floor laundry for convenience. The basement includes a side entrance with suite rough in, offering excellent potential for a future income suite or private guest space. A modern home designed with today's lifestyle in mind, ready to welcome its first owners.

Built in 2025

Essential Information

MLS® #	E4454827
Price	\$615,000
Bedrooms	3
Bathrooms	2.50
Full Baths	2
Half Baths	1



wlh
WESTERN LIVING HOMES

MAIN FLOOR PLAN
9'-1" CEILING HEIGHT

Square Footage	2,160
Acres	0.00
Year Built	2025
Type	Single Family
Sub-Type	Detached Single Family
Style	2 Storey
Status	Active

Community Information

Address	14 Gable Common
Area	Spruce Grove
Subdivision	Greenbury
City	Spruce Grove
County	ALBERTA
Province	AB
Postal Code	T7X 2W2

Amenities

Amenities	Carbon Monoxide Detectors, Ceiling 9 ft., Detectors Smoke, No Animal Home, No Smoking Home, See Remarks
Parking	Double Garage Attached

Interior

Interior Features	ensuite bathroom
Appliances	See Remarks
Heating	Forced Air-1, Natural Gas
Stories	2
Has Basement	Yes
Basement	Full, Unfinished

Exterior

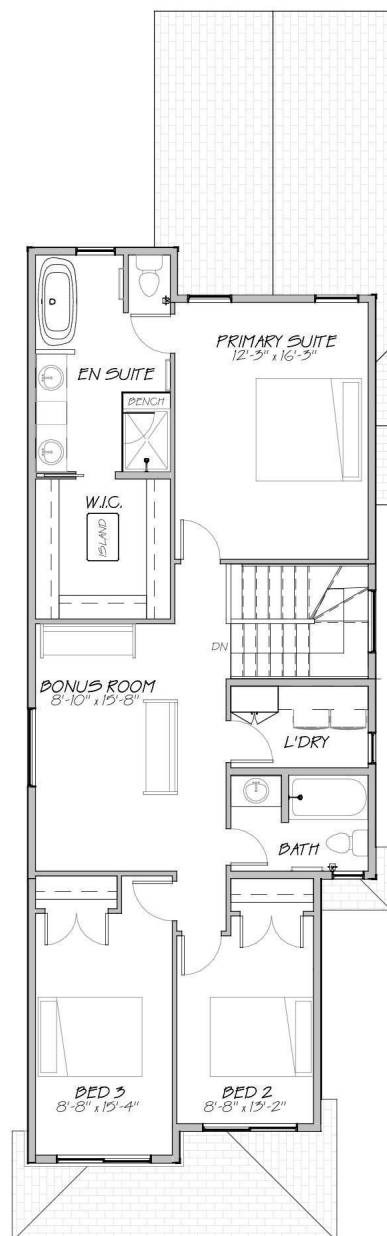
Exterior	Wood, Stone, Vinyl
Exterior Features	Golf Nearby, Playground Nearby, Public Swimming Pool, Public Transportation, Schools, Shopping Nearby
Roof	Asphalt Shingles
Construction	Wood, Stone, Vinyl
Foundation	Concrete Perimeter

School Information

Middle Greystone Centennial
High Brookwood School

Additional Information

Date Listed August 27th, 2025
Days on Market 1
Zoning Zone 91



SECOND FLOOR PLAN
8'-1" CEILING HEIGHT



DATA IS DEEMED RELIABLE BUT IS NOT GUARANTEED ACCURATE BY THE REALTORS® ASSOCIATION OF EDMONTON. COPYRIGHT 2025 BY THE REALTORS® ASSOCIATION OF EDMONTON. ALL RIGHTS RESERVED. Trademarks are owned or controlled by the Canadian Real Estate Association (CREA) and identify real estate professionals who are members of CREA (REALTOR®, REALTORS®) and/or the quality of services they provide (MLS®, Multiple Listing Service®)

Listing information last updated on August 28th, 2025 at 12:32pm MDT