

# \$315,000 - 52 Greystone Drive, Spruce Grove

MLS® #E4454604

## \$315,000

3 Bedroom, 2.00 Bathroom, 910 sqft  
Single Family on 0.00 Acres

Grove Meadows, Spruce Grove, AB

2 bedroom bi level located at the popular Grove Meadows community in Spruce Grove. Basement fully finished with extra bedroom and bathroom. Double detached garage. Corner lot. Close to schools, bus, playground with easy access to Highway 16. Judicial sale. Property to be sold as is and where is. No warranties or representations.

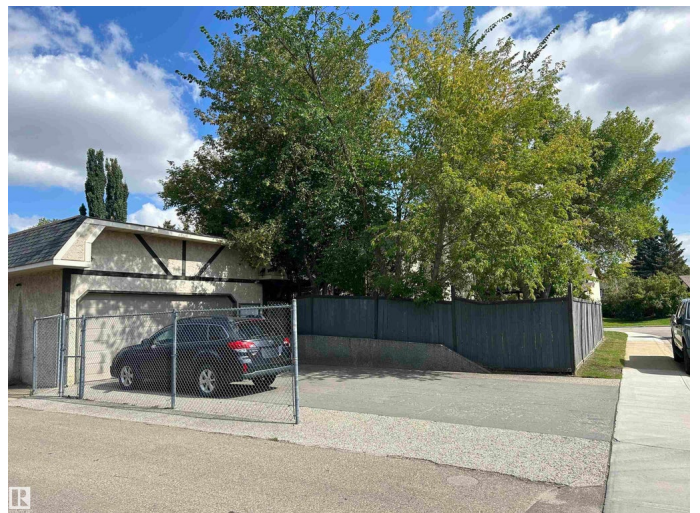
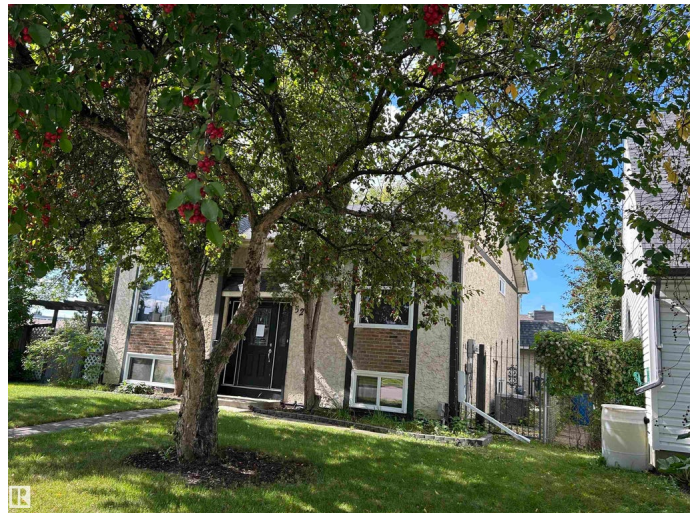
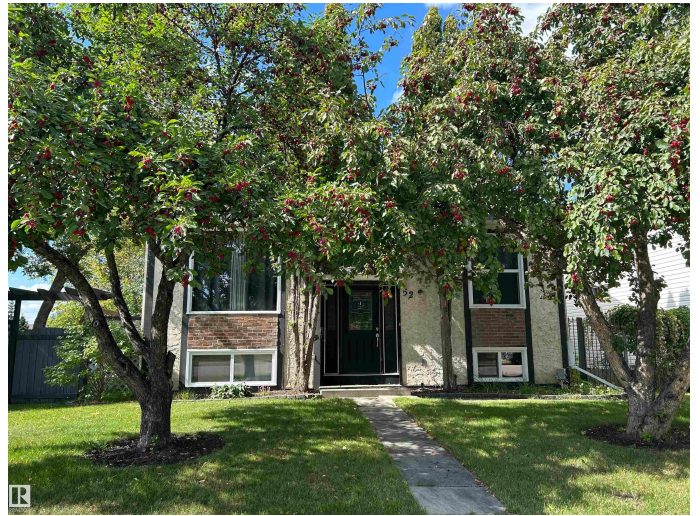
Built in 1980

## Essential Information

MLS® #	E4454604
Price	\$315,000
Bedrooms	3
Bathrooms	2.00
Full Baths	2
Square Footage	910
Acres	0.00
Year Built	1980
Type	Single Family
Sub-Type	Detached Single Family
Style	Bi-Level
Status	Active

## Community Information

Address	52 Greystone Drive
Area	Spruce Grove



Subdivision	Grove Meadows
City	Spruce Grove
County	ALBERTA
Province	AB
Postal Code	T7X 1X2

### **Amenities**

Amenities	Deck
Parking	Double Garage Detached

### **Interior**

Appliances	None
Heating	Forced Air-1, Natural Gas
Stories	2
Has Basement	Yes
Basement	Full, Finished

### **Exterior**

Exterior	Wood, Stucco
Exterior Features	Corner Lot, Fenced, Landscaped, Public Transportation, Schools, Shopping Nearby
Roof	Asphalt Shingles
Construction	Wood, Stucco
Foundation	Concrete Perimeter

### **Additional Information**

Date Listed	August 22nd, 2025
Days on Market	74
Zoning	Zone 91

DATA IS DEEMED RELIABLE BUT IS NOT GUARANTEED ACCURATE BY THE REALTORS® ASSOCIATION OF EDMONTON. COPYRIGHT 2025 BY THE REALTORS® ASSOCIATION OF EDMONTON. ALL RIGHTS RESERVED. Trademarks are owned or controlled by the Canadian Real Estate Association (CREA) and identify real estate professionals who are members of CREA (REALTOR®, REALTORS®) and/or the quality of services they provide (MLS®, Multiple Listing Service®)

Listing information last updated on November 4th, 2025 at 2:47am MST