

Courtesy Of Ellen Tam Of MaxWell Devonshire Realty

## **\$672,000 - 738 Burton Crescent, Edmonton**

MLS® #E4453780

**\$672,000**

6 Bedroom, 3.5 Bathroom, 2,285 sqft

Single Family on 0.00 Acres

Bulyea Heights, Edmonton, AB

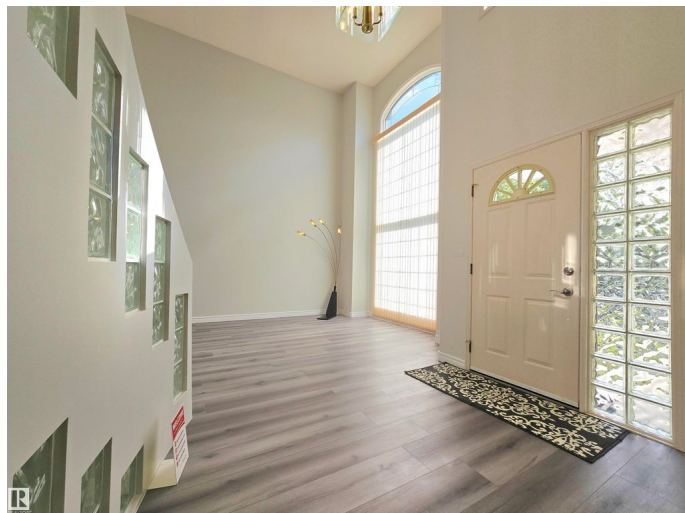
Welcome to this Beautiful 2 Storey, 6-Bedrooms 3.5 Bathrooms Executive Home in BULYEA HEIGHTS. This home features Cathedral Ceilings, Floor to Ceiling Windows that fills the home with natural light and timeless architectural details. Main Floor offers a Formal Dining Room, a Den with built-in Shelving and a cozy Gas F/P. The Kitchen with a dinette overlooks the spacious Family Room with a double sided Gas F/P. Upstairs, youâ€™ll find a large primary retreat with a walk-in closet and spa-inspired ensuite featuring a soaker tub, plus 3 more generous bedrooms and convenient upper-level laundry. Fully Finished Basement adds 2 additional bedrooms and a massive Recreational Room. Upgrades Include: 2025 Vinyl Plank, Fresh Paint, Modern Light Fixtures, 2023 HWT, 2021 Shingles, 2020 Furnace, 2018 R60 Attic foam insulation. This home offers both comfort and peace of mind. Located close to top-rated schools, parks, walking trails, and all amenities. The perfect choice for a growing family!!!

Built in 1992

### **Essential Information**

MLS® # E4453780

Price \$672,000



Bedrooms	6
Bathrooms	3.50
Full Baths	3
Half Baths	1
Square Footage	2,285
Acres	0.00
Year Built	1992
Type	Single Family
Sub-Type	Detached Single Family
Style	2 Storey
Status	Active

### **Community Information**

Address	738 Burton Crescent
Area	Edmonton
Subdivision	Bulyea Heights
City	Edmonton
County	ALBERTA
Province	AB
Postal Code	T6R 2J3

### **Amenities**

Amenities	Closet Organizers, Deck, Exterior Walls- 2"x6", No Animal Home, No Smoking Home
Parking Spaces	2
Parking	Double Garage Attached

### **Interior**

Interior Features	ensuite bathroom
Appliances	Dishwasher-Built-In, Dryer, Garage Control, Garage Opener, Hood Fan, Refrigerator, Stove-Electric, Vacuum System Attachments, Vacuum Systems, Washer, Window Coverings
Heating	Forced Air-1, Natural Gas
Fireplace	Yes
Fireplaces	Double Sided, Glass Door, Tile Surround
Stories	3
Has Basement	Yes
Basement	Full, Finished

### **Exterior**

Exterior	Wood, Stucco
Exterior Features	Fenced, Landscaped, Playground Nearby, Public Transportation, Schools, Shopping Nearby
Roof	Asphalt Shingles
Construction	Wood, Stucco
Foundation	Concrete Perimeter

### **School Information**

Elementary	George H Luck School
Middle	Archbishop Joseph MacNeil
High	Lillian Osborne HighSchool

### **Additional Information**

Date Listed	August 20th, 2025
Days on Market	76
Zoning	Zone 14
HOA Fees	157.5
HOA Fees Freq.	Annually

DATA IS DEEMED RELIABLE BUT IS NOT GUARANTEED ACCURATE BY THE REALTORS® ASSOCIATION OF EDMONTON. COPYRIGHT 2025 BY THE REALTORS® ASSOCIATION OF EDMONTON. ALL RIGHTS RESERVED. Trademarks are owned or controlled by the Canadian Real Estate Association (CREA) and identify real estate professionals who are members of CREA (REALTOR®, REALTORS®) and/or the quality of services they provide (MLS®, Multiple Listing Service®)

Listing information last updated on November 3rd, 2025 at 9:02pm MST