

\$584,900 - 1028 Berg Place, Leduc

MLS® #E4450163

\$584,900

3 Bedroom, 2.50 Bathroom, 2,207 sqft

Single Family on 0.00 Acres

Black Stone, Leduc, AB

QUICK POSSESSION AVAILABLE !!! This tastefully upgraded home backing onto GREEN space. Boasting over 2200 square feet this 3 bedroom 2.5 bathroom home is sure to impress. The main floor has an open concept and flowing floor plan opening up to your 18 foot ceilings. The kitchen has a huge island, walk through pantry, quartz counter tops, stainless appliances and tons of storage. The living room with fireplace is complimented by hardwood flooring and large seating area. To top it off you have a den as well on the main floor. Upstairs there are 3 bedrooms, a bonus room, a 5 piece bathroom, a very spacious primary bedroom that is complete with a luxury retreat 5 piece en-suite and walk in closet. Also you get upper floor laundry for convenience. The basement is awaiting your final touches. Home also has an oversized double garage with extra deep front pad parking. The community of BlackStone is among the hottest most vibrant communities in Leduc and this turn key home has it all

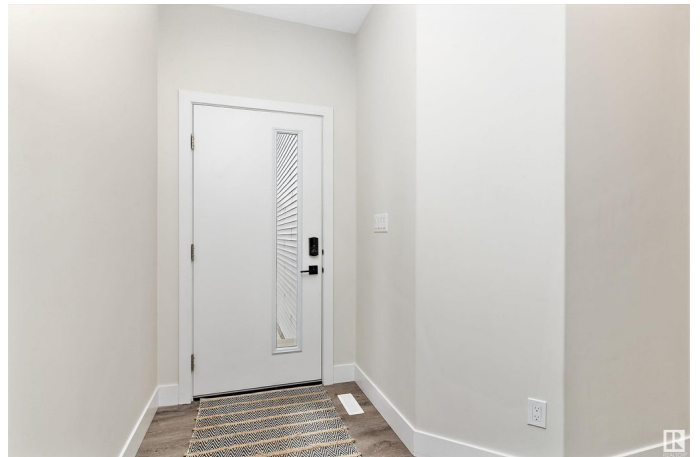
Built in 2021

Essential Information

MLS® # E4450163

Price \$584,900

Bedrooms 3



Bathrooms	2.50
Full Baths	2
Half Baths	1
Square Footage	2,207
Acres	0.00
Year Built	2021
Type	Single Family
Sub-Type	Detached Single Family
Style	2 Storey
Status	Active

Community Information

Address	1028 Berg Place
Area	Leduc
Subdivision	Black Stone
City	Leduc
County	ALBERTA
Province	AB
Postal Code	T9E 1M4

Amenities

Amenities	Air Conditioner, Deck, Vinyl Windows
Parking	Double Garage Attached, Over Sized

Interior

Interior Features	ensuite bathroom
Appliances	Air Conditioning-Central, Dishwasher-Built-In, Dryer, Garage Control, Garage Opener, Oven-Microwave, Refrigerator, Stove-Electric, Washer, Window Coverings
Heating	Forced Air-1, Natural Gas
Fireplace	Yes
Fireplaces	Tile Surround
Stories	2
Has Basement	Yes
Basement	Full, Unfinished

Exterior

Exterior	Wood, Vinyl
Exterior Features	Airport Nearby, Backs Onto Park/Trees, Fenced, Golf Nearby,

Playground Nearby, Schools, Shopping Nearby

Roof	Asphalt Shingles
Construction	Wood, Vinyl
Foundation	Concrete Perimeter

Additional Information

Date Listed	July 29th, 2025
Days on Market	49
Zoning	Zone 81

DATA IS DEEMED RELIABLE BUT IS NOT GUARANTEED ACCURATE BY THE REALTORS® ASSOCIATION OF EDMONTON. COPYRIGHT 2025 BY THE REALTORS® ASSOCIATION OF EDMONTON. ALL RIGHTS RESERVED.Trademarks are owned or controlled by the Canadian Real Estate Association (CREA) and identify real estate professionals who are members of CREA (REALTOR®, REALTORS®) and/or the quality of services they provide (MLS®, Multiple Listing Service®)

Listing information last updated on September 16th, 2025 at 1:02am MDT