

## \$225,770 - 1601 10149 Saskatchewan Drive, Edmonton

MLS® #E4450094

**\$225,770**

2 Bedroom, 2.00 Bathroom, 872 sqft

Condo / Townhouse on 0.00 Acres

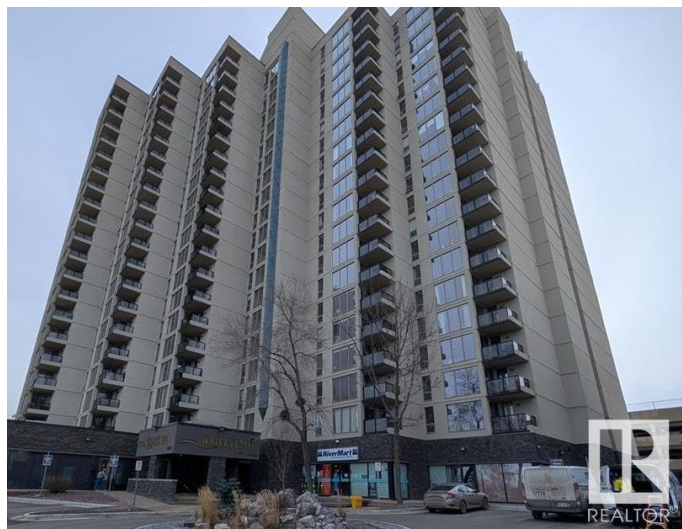
Strathcona, Edmonton, AB

Fully Renovated corner unit with breathtaking 16th-floor views of the river valley and city skyline. Located in a updated and secure building, this bright 2-bedroom, 2-bath condo features a renovated and timeless white kitchen cupboards, sleek vinyl plank flooring, two renovated bathrooms with fresh paint and fixtures throughout. The spacious living area is flooded with natural light from floor-to-ceiling windows, and opens to a glass-railed balconyâ€™perfect for year-round BBQs. Includes three appliances (stove, fridge, and dishwasher), a pantry, and an energized stall in the covered parkade. Coin laundry is conveniently located on the same floor, just steps from the unit. Building amenities include a fitness room, racquetball court, and a basketball/tennis court. Ideally located close to the University of Alberta and downtown.

Built in 1981

### Essential Information

MLS® #	E4450094
Price	\$225,770
Bedrooms	2
Bathrooms	2.00
Full Baths	2
Square Footage	872
Acres	0.00



Year Built	1981
Type	Condo / Townhouse
Sub-Type	Apartment High Rise
Style	Single Level Apartment
Status	Active

### **Community Information**

Address	1601 10149 Saskatchewan Drive
Area	Edmonton
Subdivision	Strathcona
City	Edmonton
County	ALBERTA
Province	AB
Postal Code	T6E 6B6

### **Amenities**

Amenities	Carbon Monoxide Detectors, Detectors Smoke, Exercise Room, Intercom, No Smoking Home, Parking-Plug-Ins, Parking-Visitor, Patio, Racquet Courts, Recreation Room/Centre, Secured Parking
Parking Spaces	1
Parking	Parkade

### **Interior**

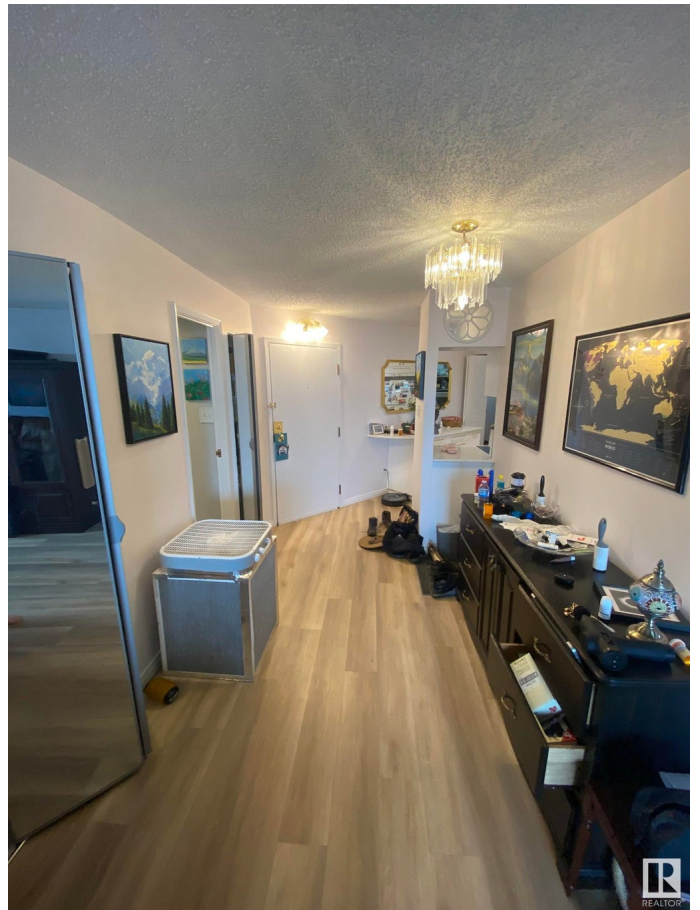
Interior Features	ensuite bathroom
Appliances	Refrigerator, Refrigerator-Energy Star, Stove-Electric
Heating	Baseboard, Natural Gas
# of Stories	20
Stories	1
Has Basement	Yes
Basement	None, No Basement

### **Exterior**

Exterior	Concrete, Stucco
Exterior Features	Back Lane, Commercial, Paved Lane, Picnic Area, Playground Nearby, Ravine View, River View, Schools, Shopping Nearby, View City, View Downtown
Roof	Tar & Gravel
Construction	Concrete, Stucco
Foundation	Concrete Perimeter

## Additional Information

Date Listed	July 28th, 2025
Days on Market	2
Zoning	Zone 15
Condo Fee	\$766



DATA IS DEEMED RELIABLE BUT IS NOT GUARANTEED ACCURATE BY THE REALTORS® ASSOCIATION OF EDMONTON. COPYRIGHT 2025 BY THE REALTORS® ASSOCIATION OF EDMONTON. ALL RIGHTS RESERVED. Trademarks are owned or controlled by the Canadian Real Estate Association (CREA) and identify real estate professionals who are members of CREA (REALTOR®, REALTORS®) and/or the quality of services they provide (MLS®, Multiple Listing Service®)

Listing information last updated on July 30th, 2025 at 9:47am MDT