

\$224,900 - 111 5280 Terwillegar Boulevard, Edmonton

MLS® #E4449814

\$224,900

2 Bedroom, 2.00 Bathroom, 872 sqft

Condo / Townhouse on 0.00 Acres

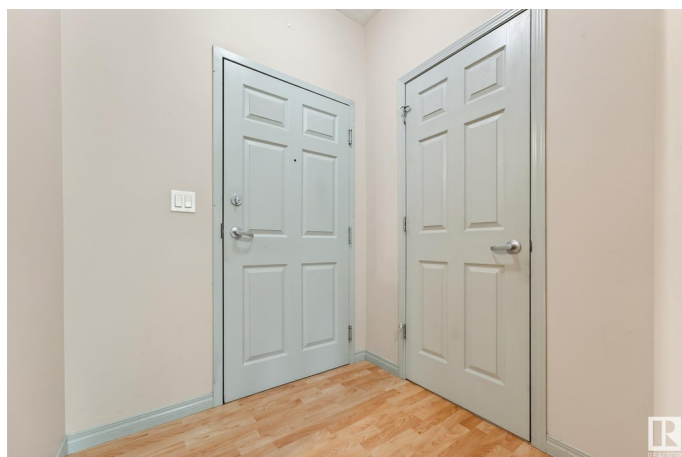
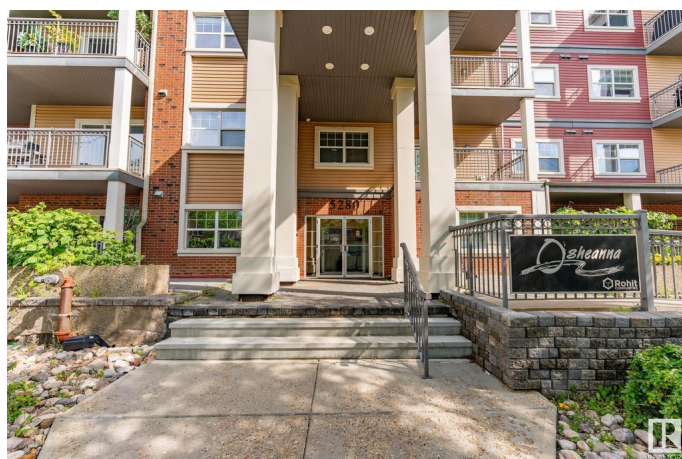
Terwillegar Towne, Edmonton, AB

Welcome to Osheanna Condo, nestled in the desirable community of Terwillegar! This well-maintained 2-bedroom unit offers a bright and functional layout, featuring a cozy fireplace in the living room and a spacious primary suite complete with a walk-in closet and private ensuite. Additional highlights include underground parking, a separate storage unit, and a convenient location just steps from parks, walking trails, and only minutes from the Anthony Henday. Whether you're a first-time buyer, downsizer, or investor, this home offers the perfect blend of comfort and convenience in a sought-after neighborhood.

Built in 2005

Essential Information

MLS® #	E4449814
Price	\$224,900
Bedrooms	2
Bathrooms	2.00
Full Baths	2
Square Footage	872
Acres	0.00
Year Built	2005
Type	Condo / Townhouse
Sub-Type	Lowrise Apartment



Style	Multi Level Apartment
Status	Active

Community Information

Address	111 5280 Terwillegar Boulevard
Area	Edmonton
Subdivision	Terwillegar Towne
City	Edmonton
County	ALBERTA
Province	AB
Postal Code	T6R 3T9

Amenities

Amenities	No Animal Home, Parking-Visitor, Patio, Recreation Room/Centre
Parking	Underground

Interior

Interior Features	ensuite bathroom
Appliances	Dishwasher-Built-In, Dryer, Refrigerator, Stove-Electric, Washer, Window Coverings
Heating	Forced Air-1, Natural Gas
Fireplace	Yes
Fireplaces	Mantel
# of Stories	4
Stories	4
Has Basement	Yes
Basement	None, No Basement

Exterior

Exterior	Wood, Brick, Vinyl
Exterior Features	Picnic Area, Playground Nearby, Public Transportation, Schools, Shopping Nearby
Roof	Asphalt Shingles
Construction	Wood, Brick, Vinyl
Foundation	Concrete Perimeter

Additional Information

Date Listed	July 25th, 2025
Days on Market	5

Zoning	Zone 14
HOA Fees	138
HOA Fees Freq.	Annually
Condo Fee	\$499

DATA IS DEEMED RELIABLE BUT IS NOT GUARANTEED ACCURATE BY THE REALTORS® ASSOCIATION OF EDMONTON. COPYRIGHT 2025 BY THE REALTORS® ASSOCIATION OF EDMONTON. ALL RIGHTS RESERVED. Trademarks are owned or controlled by the Canadian Real Estate Association (CREA) and identify real estate professionals who are members of CREA (REALTOR®, REALTORS®) and/or the quality of services they provide (MLS®, Multiple Listing Service®)

Listing information last updated on July 30th, 2025 at 10:32am MDT