

## \$429,900 - 8079 Chappelle Way, Edmonton

MLS® #E4449744

**\$429,900**

3 Bedroom, 2.50 Bathroom, 1,473 sqft

Single Family on 0.00 Acres

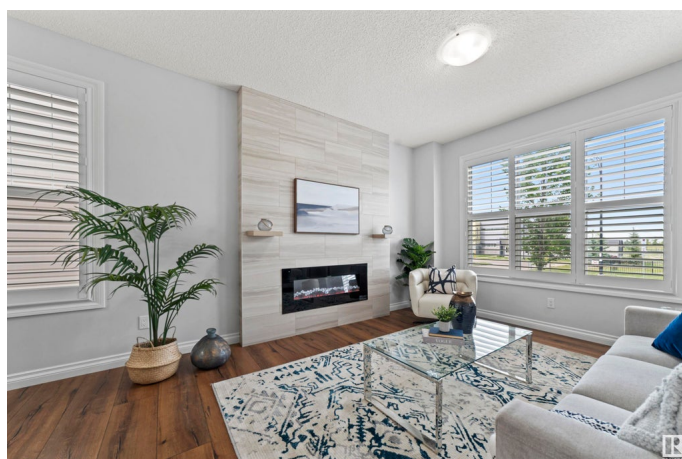
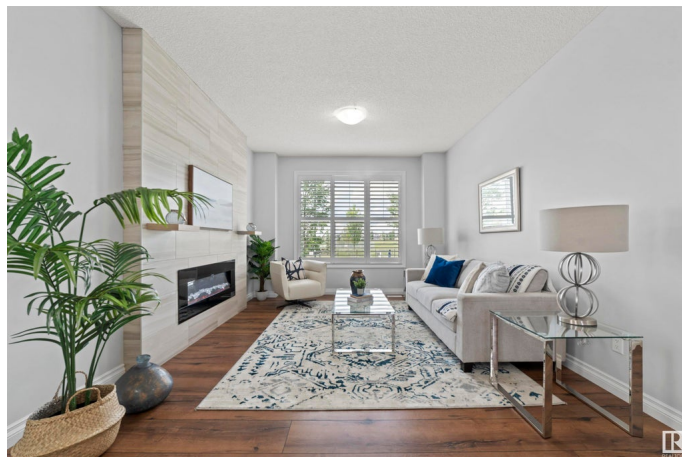
Chappelle Area, Edmonton, AB

Welcome to this stunning end-unit home in the family-friendly community of Chappelle â€” perfectly located right across from a school and close to parks, bus stops, and all amenities. This NO CONDO FEE property offers 3 bedrooms, 2.1 bathrooms, and a detached double car garage, making it an ideal choice for first-time buyers or savvy investors. The main floor boasts 9-ft ceilings, a bright and open layout, and a cozy electric fireplace for added charm. Enjoy a freshly painted interior, a modern kitchen with sleek appliances, 3 cm quartz countertops, and stylish high-end blinds throughout. With NO CARPET and upstairs laundry, every detail has been thoughtfully considered for comfort and function. Whether you're starting out or expanding your investment portfolio, this move-in-ready home offers the perfect balance of location, lifestyle, and long-term value.

Built in 2016

### Essential Information

MLS® #	E4449744
Price	\$429,900
Bedrooms	3
Bathrooms	2.50
Full Baths	2
Half Baths	1



Square Footage	1,473
Acres	0.00
Year Built	2016
Type	Single Family
Sub-Type	Residential Attached
Style	2 Storey
Status	Active

### **Community Information**

Address	8079 Chappelle Way
Area	Edmonton
Subdivision	Chappelle Area
City	Edmonton
County	ALBERTA
Province	AB
Postal Code	T6W 3L7

### **Amenities**

Amenities	On Street Parking, Ceiling 9 ft., Detectors Smoke
Parking	Double Garage Detached

### **Interior**

Interior Features	ensuite bathroom
Appliances	Dishwasher-Built-In, Dryer, Garage Control, Garage Opener, Microwave Hood Fan, Refrigerator, Stove-Electric, Washer, Window Coverings
Heating	Forced Air-1, Natural Gas
Fireplace	Yes
Fireplaces	Wall Mount
Stories	2
Has Basement	Yes
Basement	Full, Unfinished

### **Exterior**

Exterior	Wood, Vinyl
Exterior Features	Airport Nearby, Fenced, Golf Nearby, Landscaped, Playground Nearby, Public Transportation, Schools, Shopping Nearby
Roof	Asphalt Shingles
Construction	Wood, Vinyl
Foundation	Concrete Perimeter

**School Information**

Elementary	DONALD R. GETTY SCHOOL
Middle	DONALD R. GETTY SCHOOL
High	DR. ANNE ANDERSON SCHOOL

**Additional Information**

Date Listed	July 25th, 2025
Days on Market	5
Zoning	Zone 55

DATA IS DEEMED RELIABLE BUT IS NOT GUARANTEED ACCURATE BY THE REALTORS® ASSOCIATION OF EDMONTON. COPYRIGHT 2025 BY THE REALTORS® ASSOCIATION OF EDMONTON. ALL RIGHTS RESERVED.Trademarks are owned or controlled by the Canadian Real Estate Association (CREA) and identify real estate professionals who are members of CREA (REALTOR®, REALTORS®) and/or the quality of services they provide (MLS®, Multiple Listing Service®)

Listing information last updated on July 30th, 2025 at 9:47am MDT