

## \$560,000 - 4511 Kinsella Link, Edmonton

MLS® #E4449480

**\$560,000**

4 Bedroom, 3.50 Bathroom, 1,804 sqft

Single Family on 0.00 Acres

Keswick Area, Edmonton, AB

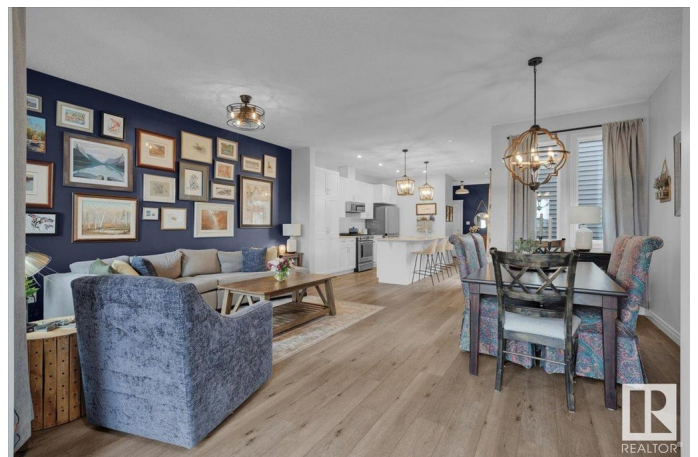
LIKE NEW, PACESETTER home w/ a double attached garage & LOADS OF UPGRADES. Located on a wide, quiet street, w/ ample parking & only minutes from walking paths, ponds, schools & MORE! Inside the home, youâ€™ll fall in love w/ the open concept living space, & loads of natural light from the large windows along the side & front of the home! The kitchen has white cabinetry, quartz counters, pull out drawers, & upgraded appliances (Including a gas stove). At the back is a mudroom, 2pc bathroom & access to your DOUBLE ATTACHED GARAGE. Upstairs has a primary room that can fit a king bed, a walk-in closet, & a spa-like 4pc ensuite w/ double sinks & a glass shower w/ a tile surround. Upstairs is completed w/ 2 more bedrooms, a full bathroom & a bonus room. The basement was finished BY THE BUILDER, & has a large rec room, extra bedroom, & 4pc bathroom. Outside youâ€™ll find a stone patio w/ a pergola. Other features include: HRV system, Rough in for A/C, Tankless hot water, quartz in the bathrooms, & MORE!

Built in 2021

### Essential Information

MLS® # E4449480

Price \$560,000



Bedrooms	4
Bathrooms	3.50
Full Baths	3
Half Baths	1
Square Footage	1,804
Acres	0.00
Year Built	2021
Type	Single Family
Sub-Type	Detached Single Family
Style	2 Storey
Status	Active

### Community Information

Address	4511 Kinsella Link
Area	Edmonton
Subdivision	Keswick Area
City	Edmonton
County	ALBERTA
Province	AB
Postal Code	T6W 4J9

### Amenities

Amenities	Hot Water Instant, No Animal Home, No Smoking Home, Natural Gas BBQ Hookup
Parking Spaces	4
Parking	Double Garage Attached, Insulated

### Interior

Interior Features	ensuite bathroom
Appliances	Dishwasher-Built-In, Dryer, Garage Control, Garage Opener, Microwave Hood Fan, Refrigerator, Stove-Gas, Washer, Window Coverings, TV Wall Mount
Heating	Forced Air-1, Natural Gas
Stories	3
Has Basement	Yes
Basement	Full, Finished

### Exterior

Exterior	Wood, Stone, Vinyl
----------	--------------------

Exterior Features	Fenced, Landscaped, Low Maintenance Landscape, Playground Nearby, Schools, Shopping Nearby
Roof	Asphalt Shingles
Construction	Wood, Stone, Vinyl
Foundation	Concrete Perimeter

**School Information**

Elementary	Joey Moss/Joan Carr
Middle	Joey Moss/Joan Carr
High	Harry Ainlay/Father Michae

**Additional Information**

Date Listed	July 24th, 2025
Days on Market	7
Zoning	Zone 56

DATA IS DEEMED RELIABLE BUT IS NOT GUARANTEED ACCURATE BY THE REALTORS® ASSOCIATION OF EDMONTON. COPYRIGHT 2025 BY THE REALTORS® ASSOCIATION OF EDMONTON. ALL RIGHTS RESERVED.Trademarks are owned or controlled by the Canadian Real Estate Association (CREA) and identify real estate professionals who are members of CREA (REALTOR®, REALTORS®) and/or the quality of services they provide (MLS®, Multiple Listing Service®)

Listing information last updated on July 31st, 2025 at 7:17am MDT