

\$1,089,000 - 8343 Saskatchewan Drive, Edmonton

MLS® #E4447684

\$1,089,000

4 Bedroom, 3.50 Bathroom, 2,356 sqft

Single Family on 0.00 Acres

Windsor Park (Edmonton), Edmonton, AB

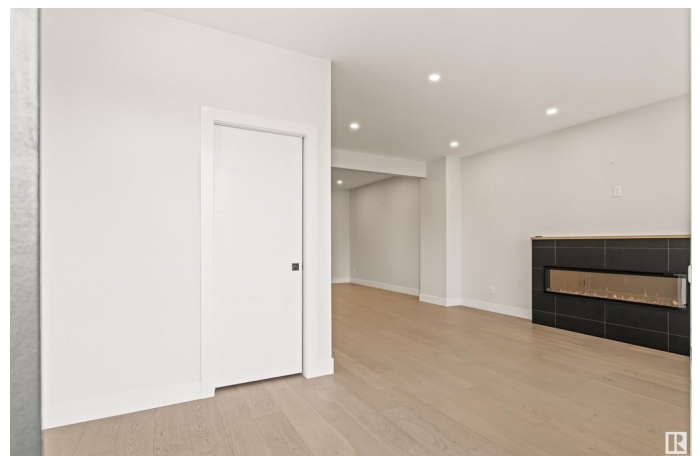
Walk to the University, the hospitals and the Jubilee, Hook up to the trails of the river valley, Hawrelak Park and the Mayfair GCC, and zip to your downtown office in only minutes from this beautifully constructed Lozen

Developments 2355 square foot 2.5 storey half duplex. Facing the river valley, features of this spacious 4 bedroom home include a 3rd storey loft with a wet bar, vaulted ceilings and access to a large west facing deck, a Spacious open main floor with 9'™ ceilings, contemporary engineered hardwood, a gourmet kitchen with black SS appliances, Quartz counters and cabinetry by Cucina Bella, the Living and dining rooms with an electric fireplace and built in desks, a 2nd level with the laundry, a 4-piece bath and 3 bedrooms, the master with a large 5-piece ensuite, and a Fully developed basement with a separate entrance, and a Fully landscaped and fenced yard with a covered deck and double detached garage. With immediate possession and this location it's a must to view!

Built in 2021

Essential Information

MLS® #	E4447684
Price	\$1,089,000
Bedrooms	4



Bathrooms	3.50
Full Baths	3
Half Baths	1
Square Footage	2,356
Acres	0.00
Year Built	2021
Type	Single Family
Sub-Type	Half Duplex
Style	2 and Half Storey
Status	Active

Community Information

Address	8343 Saskatchewan Drive
Area	Edmonton
Subdivision	Windsor Park (Edmonton)
City	Edmonton
County	ALBERTA
Province	AB
Postal Code	T6G 2A7

Amenities

Amenities	Air Conditioner, Deck, Infill Property
Parking Spaces	4
Parking	Double Garage Detached

Interior

Interior Features	ensuite bathroom
Appliances	Air Conditioning-Central, Dishwasher-Built-In, Dryer, Garage Control, Garage Opener, Hood Fan, Oven-Built-In, Refrigerator, Washer, Window Coverings, Wine/Beverage Cooler, Stove-Induction
Heating	Forced Air-1, Natural Gas
Fireplace	Yes
Fireplaces	Remote Control
Stories	4
Has Basement	Yes
Basement	Full, Finished

Exterior

Exterior	Wood, Composition, Stucco
----------	---------------------------

Exterior Features	Back Lane, Fenced, Flat Site, Golf Nearby, Landscaped, Playground Nearby, Public Transportation, Schools
Roof	Asphalt Shingles
Construction	Wood, Composition, Stucco
Foundation	Concrete Perimeter

School Information

Elementary	Windsor Park
Middle	Mckernan
High	Strathcona Composite

Additional Information

Date Listed	July 11th, 2025
Days on Market	20
Zoning	Zone 15

DATA IS DEEMED RELIABLE BUT IS NOT GUARANTEED ACCURATE BY THE REALTORS® ASSOCIATION OF EDMONTON. COPYRIGHT 2025 BY THE REALTORS® ASSOCIATION OF EDMONTON. ALL RIGHTS RESERVED.Trademarks are owned or controlled by the Canadian Real Estate Association (CREA) and identify real estate professionals who are members of CREA (REALTOR®, REALTORS®) and/or the quality of services they provide (MLS®, Multiple Listing Service®)

Listing information last updated on July 31st, 2025 at 4:02am MDT