

## \$299,000 - 9e Castle Terrace, Edmonton

MLS® #E4447379

**\$299,000**

3 Bedroom, 1.50 Bathroom, 983 sqft

Condo / Townhouse on 0.00 Acres

Caernarvon, Edmonton, AB

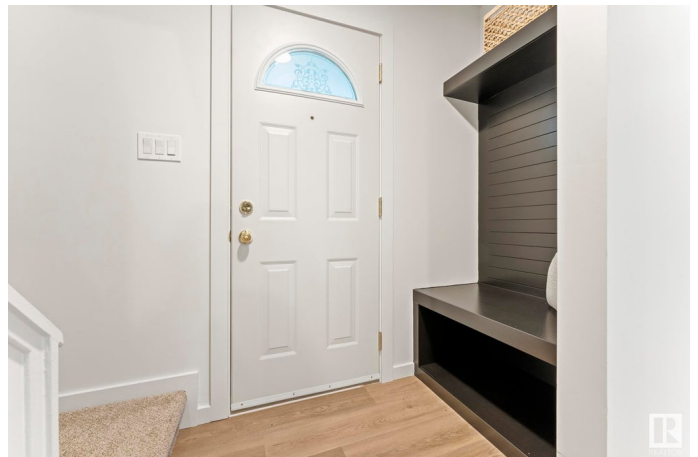
**FANTASTIC PARK LOCATION!** This **FULLY RENOVATED** townhome (1 original owner) is absolutely exquisite! Beautifully located, directly backing onto greenspace with a very **PRIVATE YARD** - it just doesn't get any better. As soon as you step inside you will notice the superior craftsmanship & premium upgrades. Quality vinyl plank flooring, a stunning kitchen with quartz counters, high end s/s appliances, custom bathrooms, numerous designer accents and a newer HE furnace & HWT – all the big ticket items have been done! The open floorplan has a lovely living room with a big picture window flowing through to a stylish dining area & gorgeous kitchen. Upstairs has 3 generous bedrooms, plenty of closet space & a new modern bathroom with glass shower. The exterior has 2 entrance doors & a private fenced yard facing the park! Castle Terrace is a well managed complex with a very healthy Reserve Fund. Close to great schools and major shopping, this affordable home is perfect for the first time buyer! **WELCOME HOME!**

Built in 1976

### Essential Information

MLS® # E4447379

Price \$299,000



Bedrooms	3
Bathrooms	1.50
Full Baths	1
Half Baths	1
Square Footage	983
Acres	0.00
Year Built	1976
Type	Condo / Townhouse
Sub-Type	Townhouse
Style	2 Storey
Status	Active

### Community Information

Address	9e Castle Terrace
Area	Edmonton
Subdivision	Caernarvon
City	Edmonton
County	ALBERTA
Province	AB
Postal Code	T5X 2E6

### Amenities

Amenities	Detectors Smoke, No Animal Home, No Smoking Home, Vinyl Windows
Parking	Stall

### Interior

Appliances	Dryer, Microwave Hood Fan, Refrigerator, Stove-Electric, Washer
Heating	Forced Air-1, Natural Gas
Stories	2
Has Basement	Yes
Basement	Full, Unfinished

### Exterior

Exterior	Wood, Vinyl
Exterior Features	Backs Onto Park/Trees, No Back Lane, Playground Nearby, Private Setting, Public Transportation, Schools, Shopping Nearby, See Remarks
Roof	Asphalt Shingles
Construction	Wood, Vinyl
Foundation	Concrete Perimeter

**Additional Information**

Date Listed	July 11th, 2025
Days on Market	1
Zoning	Zone 27
Condo Fee	\$319

DATA IS DEEMED RELIABLE BUT IS NOT GUARANTEED ACCURATE BY THE REALTORS® ASSOCIATION OF EDMONTON. COPYRIGHT 2025 BY THE REALTORS® ASSOCIATION OF EDMONTON. ALL RIGHTS RESERVED.Trademarks are owned or controlled by the Canadian Real Estate Association (CREA) and identify real estate professionals who are members of CREA (REALTOR®, REALTORS®) and/or the quality of services they provide (MLS®, Multiple Listing Service®)

Listing information last updated on July 12th, 2025 at 7:02pm MDT