

\$549,000 - 11 Labelle Crescent, St. Albert

MLS® #E4445823

\$549,000

6 Bedroom, 3.00 Bathroom, 1,207 sqft
Single Family on 0.00 Acres

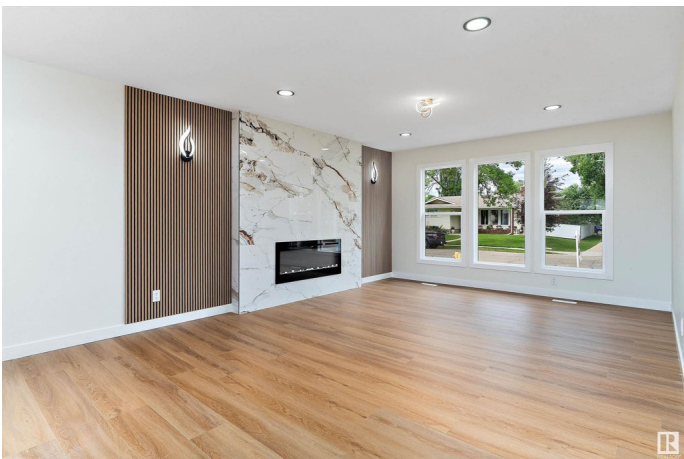
Lacombe Park, St. Albert, AB

Welcome to this stunning single-family home, fully renovated from top to bottom in the heart of St. Albert. Boasting 6 Bedrooms, 3 full bathrooms, and 2 modern kitchens with Brand new appliances, this home offers the perfect blend of style, space, and convenience. Every detail has been updated – including new windows, new siding, new plumbing, new electrical, Fully Landscaped, stylish feature wall with modern electric fireplace, and modern finishes throughout. Don't forget new double detached garage, plus a concrete pad with parking for 5 additional vehicles. Located in a prime location, close to schools, shopping, transit, and all major amenities, this move-in-ready home offers both comfort and exceptional value. A rare find in one of St. Albert’s most desirable areas!

Built in 1974

Essential Information

MLS® #	E4445823
Price	\$549,000
Bedrooms	6
Bathrooms	3.00
Full Baths	3
Square Footage	1,207
Acres	0.00
Year Built	1974



Type	Single Family
Sub-Type	Detached Single Family
Style	Bungalow
Status	Active

Community Information

Address	11 Labelle Crescent
Area	St. Albert
Subdivision	Lacombe Park
City	St. Albert
County	ALBERTA
Province	AB
Postal Code	T8N 2G6

Amenities

Amenities	Detectors Smoke, No Animal Home, No Smoking Home, Parking-Extra, See Remarks
Parking	Double Garage Detached

Interior

Interior Features	ensuite bathroom
Appliances	Dishwasher-Built-In, Dryer, Garage Opener, Microwave Hood Fan, Washer, Refrigerators-Two, Stoves-Two, Dishwasher-Two
Heating	Forced Air-1, Natural Gas
Stories	2
Has Suite	Yes
Has Basement	Yes
Basement	Full, Finished

Exterior

Exterior	Wood, Vinyl
Exterior Features	Fenced, Flat Site, Golf Nearby, Landscaped, No Back Lane, Playground Nearby, See Remarks
Roof	Asphalt Shingles
Construction	Wood, Vinyl
Foundation	Concrete Perimeter

Additional Information

Date Listed	July 4th, 2025
Days on Market	3

Zoning

Zone 24

DATA IS DEEMED RELIABLE BUT IS NOT GUARANTEED ACCURATE BY THE REALTORS® ASSOCIATION OF EDMONTON. COPYRIGHT 2025 BY THE REALTORS® ASSOCIATION OF EDMONTON. ALL RIGHTS RESERVED. Trademarks are owned or controlled by the Canadian Real Estate Association (CREA) and identify real estate professionals who are members of CREA (REALTOR®, REALTORS®) and/or the quality of services they provide (MLS®, Multiple Listing Service®)

Listing information last updated on July 7th, 2025 at 12:32am MDT