

\$606,888 - 14 Copperhaven Drive, Spruce Grove

MLS® #E4444933

\$606,888

5 Bedroom, 3.50 Bathroom, 1,849 sqft

Single Family on 0.00 Acres

Copperhaven, Spruce Grove, AB

Discover this stylish home in sought-after Copperhaven—just steps from Copperhaven K-9 School. Designed for growing families and work-from-home lifestyles, this 5-bedroom, 3.5-bath home features 9-ft ceilings and modern finishes throughout. The sleek kitchen boasts gunmetal appliances, wine fridge, granite counters, and a spacious eat-in island, plus a convenient walk-through pantry connecting to the mudroom and garage. The open living and dining area is filled with natural light and centered around an electric fireplace, with access to a large deck and backyard—perfect for entertaining. Upstairs offers 4 spacious bedrooms, laundry, and a 4-piece bath. The primary suite includes a walk-in closet and spa-like ensuite with dual sinks, soaker tub, and glass shower. The fully finished basement includes a 5th bedroom, 4-piece bath, rec room w/ fireplace, wired for a projector, and 9-ft ceilings. Extras: A/C, water softener, and double attached garage. A rare, move-in ready gem!

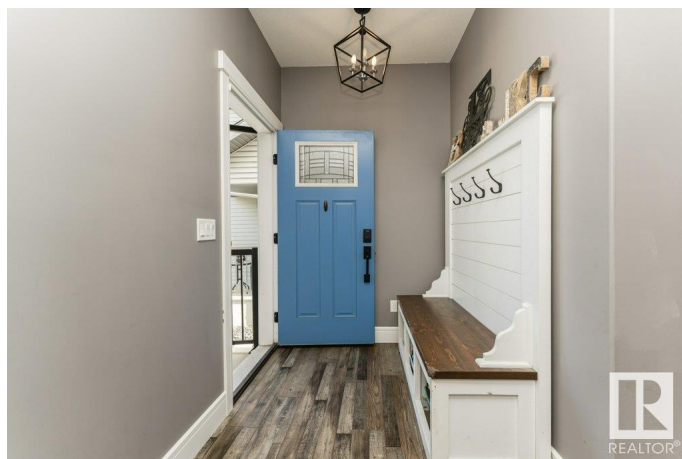
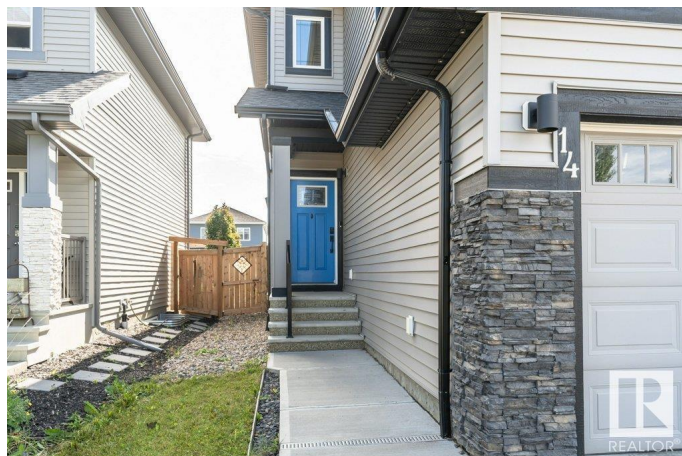
Built in 2019

Essential Information

MLS® # E4444933

Price \$606,888

Bedrooms 5



Bathrooms	3.50
Full Baths	3
Half Baths	1
Square Footage	1,849
Acres	0.00
Year Built	2019
Type	Single Family
Sub-Type	Detached Single Family
Style	2 Storey
Status	Active

Community Information

Address	14 Copperhaven Drive
Area	Spruce Grove
Subdivision	Copperhaven
City	Spruce Grove
County	ALBERTA
Province	AB
Postal Code	T7X 0Y6

Amenities

Amenities	Air Conditioner, Ceiling 9 ft., No Smoking Home, Patio
Parking Spaces	6
Parking	Double Garage Attached

Interior

Interior Features	ensuite bathroom
Appliances	Air Conditioning-Central, Dishwasher-Built-In, Dryer, Hood Fan, Oven-Microwave, Stove-Electric, Washer, Water Softener, Wine/Beverage Cooler
Heating	Forced Air-1, Natural Gas
Stories	3
Has Basement	Yes
Basement	Full, Finished

Exterior

Exterior	Wood, Vinyl
Exterior Features	Fenced, Golf Nearby, Low Maintenance Landscape, Public Swimming Pool, Public Transportation

Roof	Asphalt Shingles
Construction	Wood, Vinyl
Foundation	Concrete Perimeter

Additional Information

Date Listed	June 28th, 2025
Days on Market	66
Zoning	Zone 91

DATA IS DEEMED RELIABLE BUT IS NOT GUARANTEED ACCURATE BY THE REALTORS® ASSOCIATION OF EDMONTON. COPYRIGHT 2025 BY THE REALTORS® ASSOCIATION OF EDMONTON. ALL RIGHTS RESERVED.Trademarks are owned or controlled by the Canadian Real Estate Association (CREA) and identify real estate professionals who are members of CREA (REALTOR®, REALTORS®) and/or the quality of services they provide (MLS®, Multiple Listing Service®)

Listing information last updated on September 2nd, 2025 at 6:17am MDT