

## \$225,000 - 316 11615 Ellerslie Road, Edmonton

MLS® #E4442324

**\$225,000**

2 Bedroom, 2.00 Bathroom, 910 sqft

Condo / Townhouse on 0.00 Acres

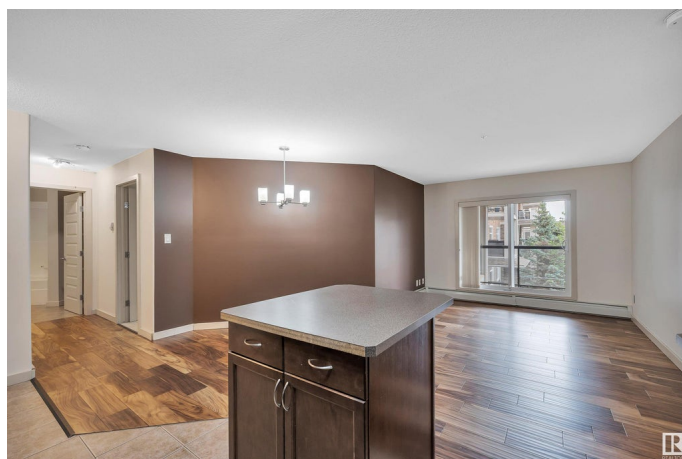
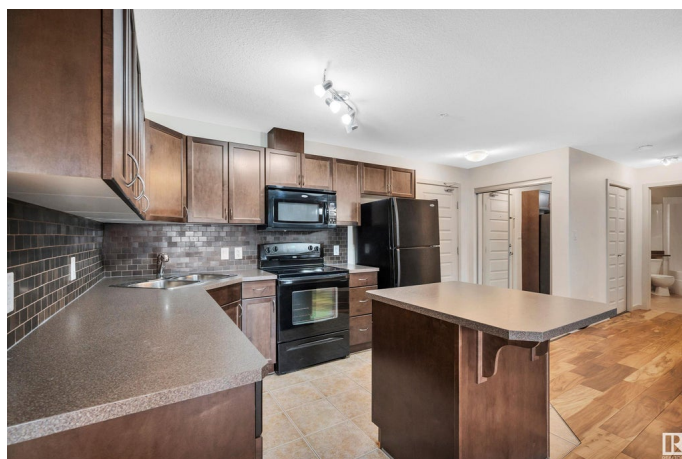
Rutherford (Edmonton), Edmonton, AB

Welcome to Unit 316! This beautiful 2-bedroom, 2-bathroom condo offers a bright, open layout with brand new flooring! Enjoy a modern kitchen featuring dark cabinetry, sleek black appliances, and a spacious living area perfect for relaxing or entertaining. Step out onto your large private balcony—ideal for morning coffee or winding down after a long day. Additional features include in-suite laundry, underground titled parking, and a private storage space. The building also offers fantastic amenities: a full exercise room, a welcoming social room, and even a guest suite available to book for visiting family and friends. Conveniently located near shopping, parks, public transit, and more—everything you need is right at your doorstep!

Built in 2007

### Essential Information

MLS® #	E4442324
Price	\$225,000
Bedrooms	2
Bathrooms	2.00
Full Baths	2
Square Footage	910
Acres	0.00
Year Built	2007



Type	Condo / Townhouse
Sub-Type	Lowrise Apartment
Style	Single Level Apartment
Status	Active

### Community Information

Address	316 11615 Ellerslie Road
Area	Edmonton
Subdivision	Rutherford (Edmonton)
City	Edmonton
County	ALBERTA
Province	AB
Postal Code	T6W 0J3

### Amenities

Amenities	Detectors Smoke, Exercise Room, Guest Suite, Intercom, Parking-Visitor, Social Rooms, Storage Cage
Parking	Heated, Underground

### Interior

Interior Features	ensuite bathroom
Appliances	Dishwasher-Built-In, Dryer, Microwave Hood Fan, Refrigerator, Stove-Electric, Washer, Window Coverings
Heating	Baseboard, Natural Gas
# of Stories	4
Stories	4
Has Basement	Yes
Basement	None, No Basement

### Exterior

Exterior	Wood, Stone, Vinyl
Exterior Features	Flat Site, Landscaped, Public Transportation, Shopping Nearby
Roof	Asphalt Shingles
Construction	Wood, Stone, Vinyl
Foundation	Concrete Perimeter

### Additional Information

Date Listed	June 13th, 2025
Days on Market	15

Zoning	Zone 55
Condo Fee	\$584

DATA IS DEEMED RELIABLE BUT IS NOT GUARANTEED ACCURATE BY THE REALTORS® ASSOCIATION OF EDMONTON. COPYRIGHT 2025 BY THE REALTORS® ASSOCIATION OF EDMONTON. ALL RIGHTS RESERVED. Trademarks are owned or controlled by the Canadian Real Estate Association (CREA) and identify real estate professionals who are members of CREA (REALTOR®, REALTORS®) and/or the quality of services they provide (MLS®, Multiple Listing Service®)

Listing information last updated on June 28th, 2025 at 4:32am MDT