

## \$325,000 - 62 2021 Grantham Court, Edmonton

MLS® #E4440910

**\$325,000**

3 Bedroom, 2.50 Bathroom, 1,225 sqft

Condo / Townhouse on 0.00 Acres

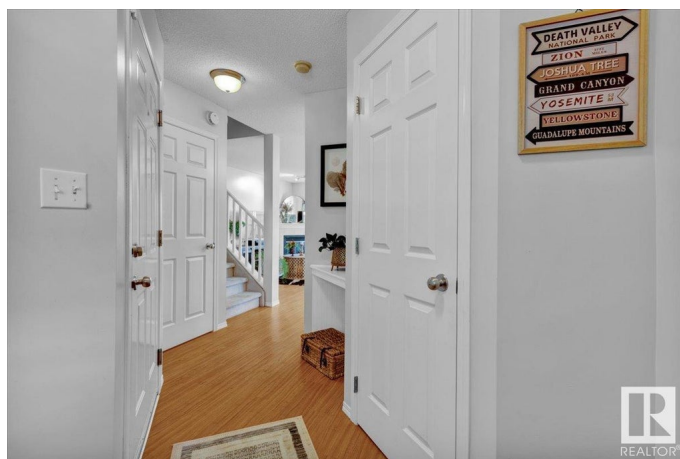
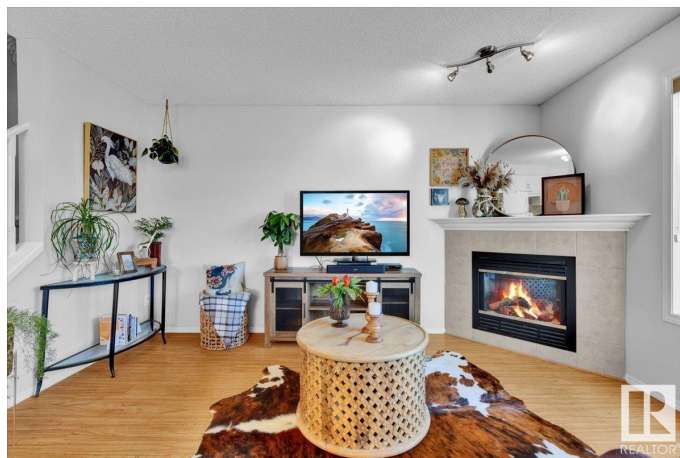
Glastonbury, Edmonton, AB

Welcome home to this meticulously maintained townhouse in the beautiful neighbourhood of Glastonbury. The main floor features modern flooring, big bright windows and a functional layout. The beautiful farmhouse inspired kitchen offers trendy gold hardware, updated cabinetry and light fixtures, plenty of cabinets and a spacious island. Relax in front of your gas fireplace or head outside to your private and beautiful backyard oasis. Upstairs offers 2 spacious bedrooms with the primary featuring an ensuite bathroom and walk in closet. Downstairs you will find an additional bedroom or living room space (you choose) and laundry area. Additional features of this home include; central air conditioning, central vacuum, single attached garage, garburator and newer shingles. This home is conveniently located near shopping, transit, schools, the whitemud and the Anthony Henday.

Built in 2002

### Essential Information

MLS® #	E4440910
Price	\$325,000
Bedrooms	3
Bathrooms	2.50
Full Baths	2



Half Baths	1
Square Footage	1,225
Acres	0.00
Year Built	2002
Type	Condo / Townhouse
Sub-Type	Half Duplex
Style	2 Storey
Status	Active

### **Community Information**

Address	62 2021 Grantham Court
Area	Edmonton
Subdivision	Glastonbury
City	Edmonton
County	ALBERTA
Province	AB
Postal Code	T5T 6V7

### **Amenities**

Amenities	No Smoking Home
Parking	Single Garage Attached

### **Interior**

Interior Features	ensuite bathroom
Appliances	Air Conditioning-Central, Dishwasher-Built-In, Dryer, Garage Control, Garage Opener, Hood Fan, Refrigerator, Storage Shed, Stove-Electric, Vacuum System Attachments, Vacuum Systems, Washer, Window Coverings
Heating	Forced Air-1, Natural Gas
Fireplace	Yes
Fireplaces	Mantel
Stories	3
Has Basement	Yes
Basement	Full, Partially Finished

### **Exterior**

Exterior	Wood, Vinyl
Exterior Features	Fenced, Flat Site, Landscaped, Low Maintenance Landscape, Public Transportation, Schools, Shopping Nearby

Roof	Asphalt Shingles
Construction	Wood, Vinyl
Foundation	Concrete Perimeter

**Additional Information**

Date Listed	June 6th, 2025
Days on Market	1
Zoning	Zone 58
HOA Fees	63
HOA Fees Freq.	Annually
Condo Fee	\$259

DATA IS DEEMED RELIABLE BUT IS NOT GUARANTEED ACCURATE BY THE REALTORS® ASSOCIATION OF EDMONTON. COPYRIGHT 2025 BY THE REALTORS® ASSOCIATION OF EDMONTON. ALL RIGHTS RESERVED.Trademarks are owned or controlled by the Canadian Real Estate Association (CREA) and identify real estate professionals who are members of CREA (REALTOR®, REALTORS®) and/or the quality of services they provide (MLS®, Multiple Listing Service®)

Listing information last updated on June 7th, 2025 at 8:32pm MDT