

\$625,000 - 3018 110a Street, Edmonton

MLS® #E4440181

\$625,000

4 Bedroom, 3.00 Bathroom, 1,766 sqft
Single Family on 0.00 Acres

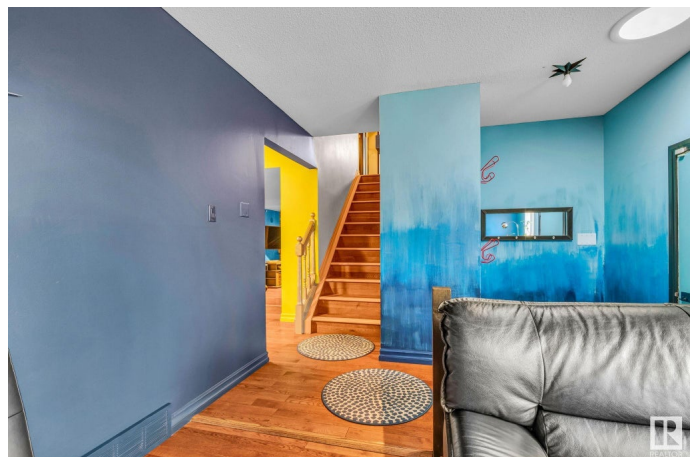
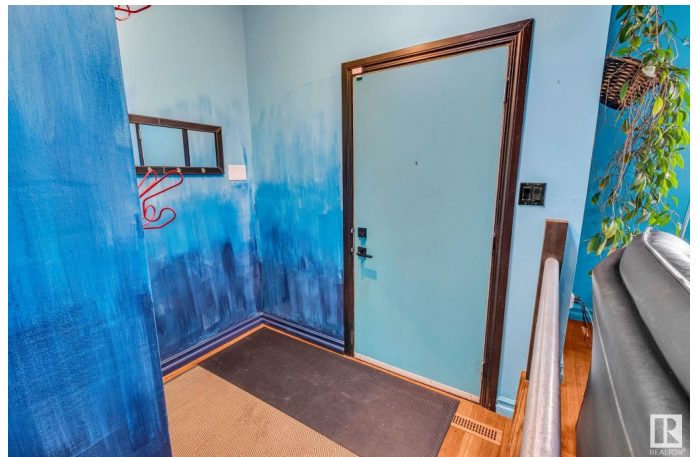
Steinhauer, Edmonton, AB

RENOVATED 4 Bed & 3 Bath WITH ALL THE EXTRAS!! Nestled on a mature lot boasting fruit trees, a large garden, greenhouse, BBQ/smoke pit & powered shed! Step inside and be greeted by a wood-burning fireplace, perfect for cozy evenings. The spacious layout includes a partially finished basement, offering endless possibilities for a home gym, man cave, or additional living space. Recent upgrades include a brand-new hot water tank, new furnace, central air conditioning ensuring year-round comfort. A new driveway and walkway lead to the double attached garage, providing curb appeal and convenience. Step outside and enjoy the outdoors from your large covered patio, perfect for entertaining or relaxing in any season. This home truly combines charm with all the modern upgrades you need.

Built in 1976

Essential Information

| | |
|----------------|-----------|
| MLS® # | E4440181 |
| Price | \$625,000 |
| Bedrooms | 4 |
| Bathrooms | 3.00 |
| Full Baths | 3 |
| Square Footage | 1,766 |
| Acres | 0.00 |



| | |
|------------|------------------------|
| Year Built | 1976 |
| Type | Single Family |
| Sub-Type | Detached Single Family |
| Style | 4 Level Split |
| Status | Active |

Community Information

| | |
|-------------|------------------|
| Address | 3018 110a Street |
| Area | Edmonton |
| Subdivision | Steinhauer |
| City | Edmonton |
| County | ALBERTA |
| Province | AB |
| Postal Code | T6J 3G1 |

Amenities

| | |
|----------------|--|
| Amenities | Air Conditioner, Greenhouse, Vinyl Windows |
| Parking Spaces | 4 |
| Parking | Double Garage Attached |

Interior

| | |
|-------------------|---|
| Interior Features | ensuite bathroom |
| Appliances | Air Conditioning-Central, Dishwasher-Built-In, Microwave Hood Fan, Refrigerator, Stacked Washer/Dryer, Storage Shed, Stove-Electric |
| Heating | Forced Air-1, Natural Gas, Wood |
| Fireplace | Yes |
| Fireplaces | Woodstove |
| Stories | 3 |
| Has Basement | Yes |
| Basement | Full, Partially Finished |

Exterior

| | |
|-------------------|---|
| Exterior | Wood, Asphalt |
| Exterior Features | Fenced, Flat Site, Fruit Trees/Shrubs, Shopping Nearby, Treed Lot |
| Roof | Asphalt Shingles |
| Construction | Wood, Asphalt |
| Foundation | Concrete Perimeter |

Additional Information

Date Listed June 3rd, 2025

Days on Market 60

Zoning Zone 16

DATA IS DEEMED RELIABLE BUT IS NOT GUARANTEED ACCURATE BY THE REALTORS® ASSOCIATION OF EDMONTON. COPYRIGHT 2025 BY THE REALTORS® ASSOCIATION OF EDMONTON. ALL RIGHTS RESERVED. Trademarks are owned or controlled by the Canadian Real Estate Association (CREA) and identify real estate professionals who are members of CREA (REALTOR®, REALTORS®) and/or the quality of services they provide (MLS®, Multiple Listing Service®)

Listing information last updated on August 2nd, 2025 at 3:17am MDT