

\$204,999 - 245 Edwards Drive, Edmonton

MLS® #E4440143

\$204,999

2 Bedroom, 2.00 Bathroom, 832 sqft

Condo / Townhouse on 0.00 Acres

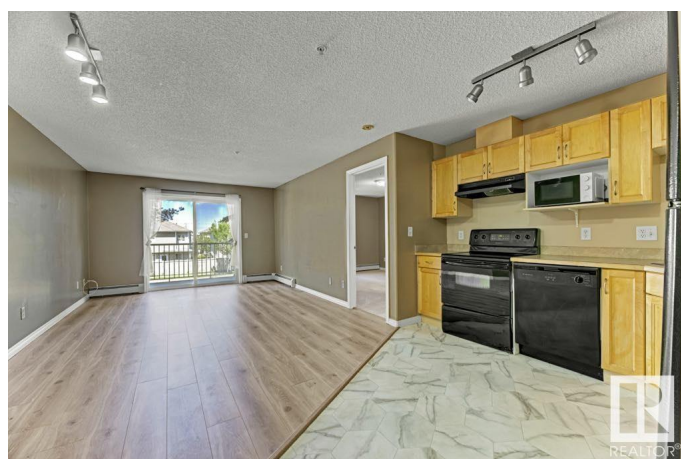
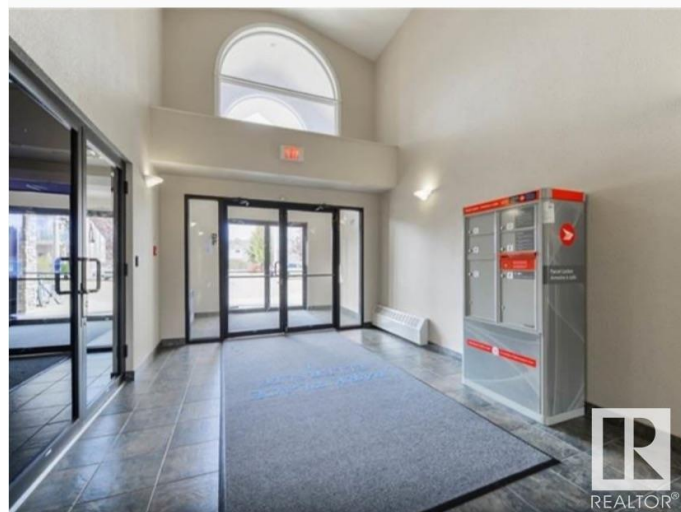
Ellerslie, Edmonton, AB

Visit the Listing Brokerage (and/or listing REALTOR®) website to obtain additional information. Wheelchair accessible with elevator. -Clean condo and ready to move in. -New flooring in entire condo -Great investment property -Bright Second floor 2 bedrooms and 2 full bathrooms with huge balcony and brand new carpet and flooring. -Condo Fee - includes heating, water, sewer, garbage and waste disposal, landscaping, reserve fund, common area insurance -Master bedroom has walk in closet. -In-suite laundry. Plenty of storage. -Well maintained building, Surrounded by walking trail. -24 hours security camera -Gym and fitness room -1 energized parking stall -plenty of free parking on Edwards drive and Easton drive -Easy access to Anthony Henday, Nisku, airport. Bus stop is steps away.

Built in 2004

Essential Information

MLS® #	E4440143
Price	\$204,999
Bedrooms	2
Bathrooms	2.00
Full Baths	2
Square Footage	832
Acres	0.00



Year Built	2004
Type	Condo / Townhouse
Sub-Type	Lowrise Apartment
Style	Single Level Apartment
Status	Active

Community Information

Address	245 Edwards Drive
Area	Edmonton
Subdivision	Ellerslie
City	Edmonton
County	ALBERTA
Province	AB
Postal Code	T6X 1J9

Amenities

Amenities	Off Street Parking, On Street Parking, Parking-Plug-Ins
Parking Spaces	1
Parking	Stall

Interior

Interior Features	ensuite bathroom
Appliances	See Remarks
Heating	Baseboard, See Remarks
# of Stories	4
Stories	1
Has Basement	Yes
Basement	None, No Basement

Exterior

Exterior	Other, Vinyl
Exterior Features	Public Transportation, Shopping Nearby, See Remarks
Roof	Unknown
Construction	Other, Vinyl
Foundation	Concrete Perimeter

Additional Information

Date Listed	June 2nd, 2025
Days on Market	12

Zoning	Zone 53
Condo Fee	\$395

DATA IS DEEMED RELIABLE BUT IS NOT GUARANTEED ACCURATE BY THE REALTORS® ASSOCIATION OF EDMONTON. COPYRIGHT 2025 BY THE REALTORS® ASSOCIATION OF EDMONTON. ALL RIGHTS RESERVED. Trademarks are owned or controlled by the Canadian Real Estate Association (CREA) and identify real estate professionals who are members of CREA (REALTOR®, REALTORS®) and/or the quality of services they provide (MLS®, Multiple Listing Service®)

Listing information last updated on June 14th, 2025 at 7:17pm MDT