

\$174,000 - 105 Mckenney Avenue, St. Albert

MLS® #E4439641

\$174,000

2 Bedroom, 1.50 Bathroom, 1,022 sqft
Condo / Townhouse on 0.00 Acres

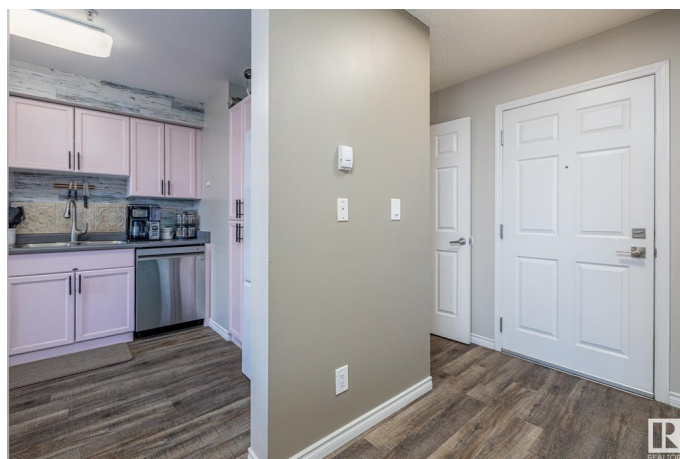
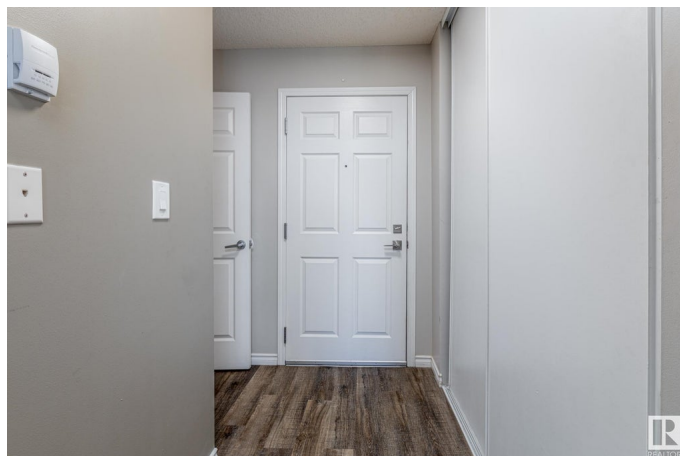
Lacombe Park, St. Albert, AB

Well Kept and UPGRADED! Newer Floors, paint, and stainless steel appliances (2022)! Don't miss this large, spacious TOP FLOOR 2 bed 1.5 bath townhome style apartment, with reasonable condo fees including both HEAT & WATER! Other perks include a spacious laundry room with cabinet space, a large storage closet, and vinyl windows! The building upgrades include a a sprinkler system, and renovated common area! Located close to the plentiful amenities of central St Albert, walking distance to Langley Park, Mission Park or St Albert's River Valley! This is a MUST SEE!

Built in 1977

Essential Information

MLS® #	E4439641
Price	\$174,000
Bedrooms	2
Bathrooms	1.50
Full Baths	1
Half Baths	1
Square Footage	1,022
Acres	0.00
Year Built	1977
Type	Condo / Townhouse
Sub-Type	Lowrise Apartment



Style 2 Storey
Status Active

Community Information

Address 105 Mckenney Avenue
Area St. Albert
Subdivision Lacombe Park
City St. Albert
County ALBERTA
Province AB
Postal Code T8N 2Y2

Amenities

Amenities Deck, Detectors Smoke, No Animal Home, Parking-Plug-Ins, Parking-Visitor, Security Door, Sprinkler System-Fire, Storage-In-Suite, Vinyl Windows
Parking Stall

Interior

Appliances Dishwasher-Built-In, Dryer, Microwave Hood Fan, Refrigerator, Stove-Electric, Washer
Heating Baseboard, Natural Gas
of Stories 2
Stories 2
Has Basement Yes
Basement None, No Basement

Exterior

Exterior Wood, Vinyl
Exterior Features No Back Lane, Playground Nearby, Public Transportation, Schools, Shopping Nearby
Roof Asphalt Shingles
Construction Wood, Vinyl
Foundation Concrete Perimeter

Additional Information

Date Listed May 30th, 2025
Days on Market 15
Zoning Zone 24
Condo Fee \$498

DATA IS DEEMED RELIABLE BUT IS NOT GUARANTEED ACCURATE BY THE REALTORS® ASSOCIATION OF EDMONTON. COPYRIGHT 2025 BY THE REALTORS® ASSOCIATION OF EDMONTON. ALL RIGHTS RESERVED. Trademarks are owned or controlled by the Canadian Real Estate Association (CREA) and identify real estate professionals who are members of CREA (REALTOR®, REALTORS®) and/or the quality of services they provide (MLS®, Multiple Listing Service®)

Listing information last updated on June 14th, 2025 at 8:47pm MDT