

Courtesy Of Greg B Rosychuk Of Real Broker

\$575,000 - 8956 81 Avenue, Edmonton

MLS® #E4439378

\$575,000

5 Bedroom, 3.50 Bathroom, 1,591 sqft

Single Family on 0.00 Acres

King Edward Park, Edmonton, AB

SIDE ENTERANCE WITH SECOND

KITCHEN! Modern half duplex in King Edward

Park with 3+2 bedrooms, 3.5 baths, and over 1500 sq ft plus a fully finished basement.

The open-concept main floor features a bright kitchen with glossy cabinetry, stainless steel appliances, hardwood floors, a stone-faced electric fireplace, and large windows. Direct

access to the back deck and double detached garage. Upstairs: large primary suite with walk-in closet and 4-piece ensuite, 2 more

bedrooms, 4-piece bath, and laundry. The fully finished basement has a separate entrance, 2

bedrooms, 4-piece bath, and a second kitchen—ideal for extended family or guests

with stacked washer and dryer. Landscaped and fenced yard perfect for pets. Walk to

Whyte Ave, Bonnie Doon, schools, and more. Don't miss out on this fantastic home!

Built in 2017

Essential Information

MLS® # E4439378

Price \$575,000

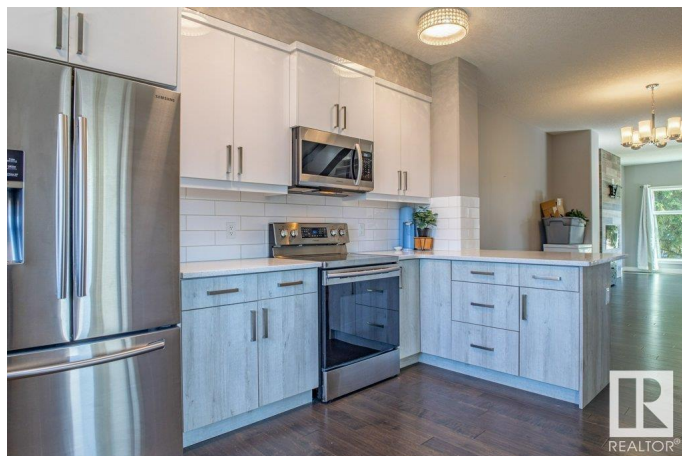
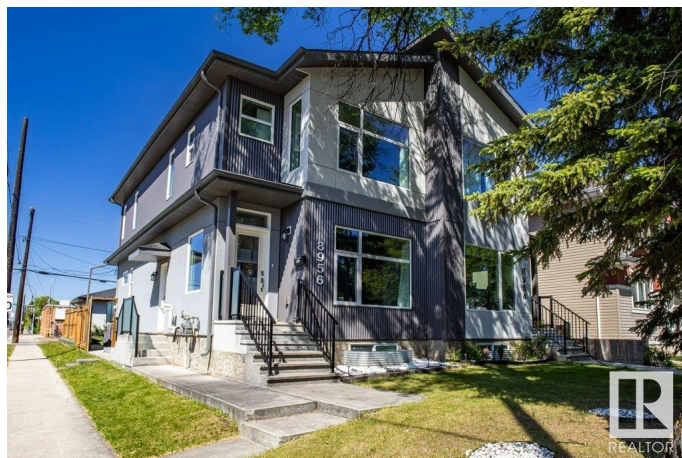
Bedrooms 5

Bathrooms 3.50

Full Baths 3

Half Baths 1

Square Footage 1,591



Acres	0.00
Year Built	2017
Type	Single Family
Sub-Type	Half Duplex
Style	2 Storey
Status	Active

Community Information

Address	8956 81 Avenue
Area	Edmonton
Subdivision	King Edward Park
City	Edmonton
County	ALBERTA
Province	AB
Postal Code	T6C 0W8

Amenities

Amenities	Ceiling 9 ft., Closet Organizers, Detectors Smoke, Hot Water Natural Gas, No Animal Home, No Smoking Home, Vinyl Windows
Parking	Double Garage Detached

Interior

Interior Features	ensuite bathroom
Appliances	Dishwasher-Built-In, Dryer, Garage Opener, Hood Fan, Microwave Hood Fan, Stacked Washer/Dryer, Washer, Window Coverings, Refrigerators-Two, Stoves-Two, TV Wall Mount
Heating	Forced Air-1, Natural Gas
Fireplace	Yes
Fireplaces	Insert
Stories	3
Has Suite	Yes
Has Basement	Yes
Basement	Full, Finished

Exterior

Exterior	Wood, Metal, Stucco
Exterior Features	Back Lane, Corner Lot, Fenced, Landscaped, Public Transportation, Shopping Nearby
Roof	Asphalt Shingles

Construction	Wood, Metal, Stucco
Foundation	Concrete Perimeter

Additional Information

Date Listed	May 30th, 2025
Days on Market	15
Zoning	Zone 17

DATA IS DEEMED RELIABLE BUT IS NOT GUARANTEED ACCURATE BY THE REALTORS® ASSOCIATION OF EDMONTON. COPYRIGHT 2025 BY THE REALTORS® ASSOCIATION OF EDMONTON. ALL RIGHTS RESERVED.Trademarks are owned or controlled by the Canadian Real Estate Association (CREA) and identify real estate professionals who are members of CREA (REALTOR®, REALTORS®) and/or the quality of services they provide (MLS®, Multiple Listing Service®)

Listing information last updated on June 14th, 2025 at 6:32am MDT