

\$420,000 - 1213 Gillespie Crescent, Edmonton

MLS® #E4439048

\$420,000

4 Bedroom, 3.00 Bathroom, 1,040 sqft

Single Family on 0.00 Acres

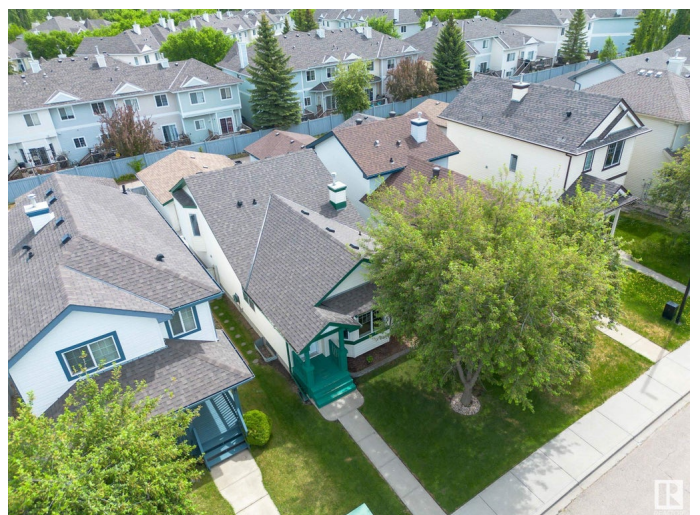
Glastonbury, Edmonton, AB

Charming HOME-2-LOVE in Glastonbury is ready to welcome your family. Set your sights on this 4-level spit home showcasing over 1985 sqft of living space with 4-bedrooms (2 upper-level, 2 lower-levels) & 3 full bathrooms. Situated in a cut de sac, tree-line street with west facing back yard for great summer sun & back entertaining deck. Steps away from walking paths & trails @ Guinevere Park & local amenities. Recent updated include new roof(2021), central A/C(2024) & luxury vinyl plank flooring. Beautiful natural light on the main floor with vaulted ceilings and huge windows. Kitchen is a great space with pantry and spacious dining area. The flex space that is perfect for a home office or kids play room. The third level is open with glass panels and features a cozy second living room with corner gas fireplace. The basement offers a large room, full bath and bar area. Fully fenced and oversized double garage complete this wonderful home! GREAT MUST SEE HOME!

Built in 2002

Essential Information

MLS® #	E4439048
Price	\$420,000
Bedrooms	4
Bathrooms	3.00



Full Baths	3
Square Footage	1,040
Acres	0.00
Year Built	2002
Type	Single Family
Sub-Type	Detached Single Family
Style	4 Level Split
Status	Active

Community Information

Address	1213 Gillespie Crescent
Area	Edmonton
Subdivision	Glastonbury
City	Edmonton
County	ALBERTA
Province	AB
Postal Code	T5T 6M5

Amenities

Amenities	On Street Parking, Air Conditioner, Ceiling 9 ft., Deck, Detectors Smoke, Front Porch, Television Connection, Vaulted Ceiling, Vinyl Windows, Wet Bar
Parking	Double Garage Detached, Over Sized, Rear Drive Access

Interior

Interior Features	ensuite bathroom
Appliances	Air Conditioning-Central, Dishwasher-Built-In, Dryer, Garage Control, Garage Opener, Refrigerator, Stove-Electric, Window Coverings
Heating	Forced Air-1, Natural Gas
Fireplace	Yes
Fireplaces	Corner, Insert, Mantel
Stories	4
Has Basement	Yes
Basement	Full, Finished

Exterior

Exterior	Wood, Vinyl
Exterior Features	Back Lane, Fenced, Golf Nearby, Landscaped, Paved Lane, Playground Nearby, Public Transportation, Schools, Shopping Nearby

Roof	Asphalt Shingles
Construction	Wood, Vinyl
Foundation	Concrete Perimeter

Additional Information

Date Listed	May 29th, 2025
Days on Market	10
Zoning	Zone 58
HOA Fees	175
HOA Fees Freq.	Annually

DATA IS DEEMED RELIABLE BUT IS NOT GUARANTEED ACCURATE BY THE REALTORS® ASSOCIATION OF EDMONTON. COPYRIGHT 2025 BY THE REALTORS® ASSOCIATION OF EDMONTON. ALL RIGHTS RESERVED.Trademarks are owned or controlled by the Canadian Real Estate Association (CREA) and identify real estate professionals who are members of CREA (REALTOR®, REALTORS®) and/or the quality of services they provide (MLS®, Multiple Listing Service®)

Listing information last updated on June 7th, 2025 at 10:47pm MDT