

\$759,900 - 20708 90 Avenue, Edmonton

MLS® #E4439032

\$759,900

4 Bedroom, 3.50 Bathroom, 2,746 sqft

Single Family on 0.00 Acres

Suder Greens, Edmonton, AB

Over 4,000 SqFt of finished living space, this meticulously maintained estate home sits on a pie-shaped lot in a quiet cul-de-sac, just steps from Lewis Estates Golf Course. The grand 18'™ open-to-above foyer leads to a main floor with a dedicated office, formal dining room, and multiple living areas. The gourmet kitchen and breakfast nook flow into the family room, boasting a gas fireplace and soaring 18'™ ceilings. Upstairs, the massive owner's suite features multiple sitting areas, a generous walk-in closet, and a spa-like 5-piece ensuite with a makeup counter. Two oversized bedrooms and a 5-piece main bath complete the upper level. The finished basement is perfect for entertaining, with a large rec room fully equipped with a wet bar, a guest bedroom, a gym (or 5th bedroom) & a full 4 piece bath. The beautifully landscaped yard includes a stamped concrete deck, gazebo, mature trees, and a serene fish pond. A true gem in an exclusive location!

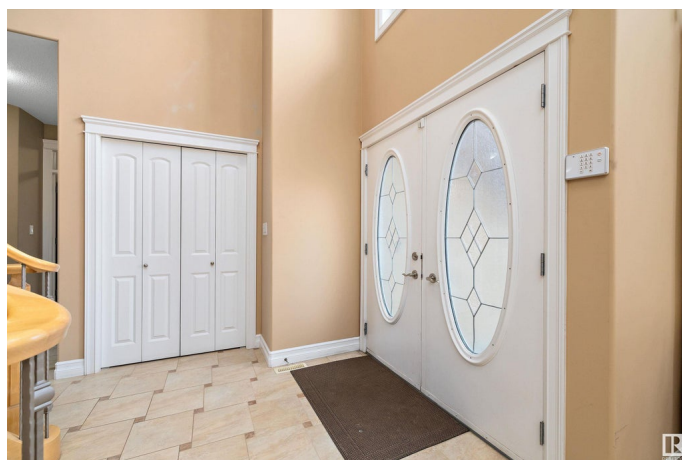
Built in 2007

Essential Information

MLS® # E4439032

Price \$759,900

Bedrooms 4



Bathrooms	3.50
Full Baths	3
Half Baths	1
Square Footage	2,746
Acres	0.00
Year Built	2007
Type	Single Family
Sub-Type	Detached Single Family
Style	2 Storey
Status	Active

Community Information

Address	20708 90 Avenue
Area	Edmonton
Subdivision	Suder Greens
City	Edmonton
County	ALBERTA
Province	AB
Postal Code	T5T 1T4

Amenities

Amenities	Deck
Parking	Double Garage Attached

Interior

Interior Features	ensuite bathroom
Appliances	Air Conditioning-Central, Dishwasher-Built-In, Dryer, Garage Control, Garage Opener, Hood Fan, Refrigerator, Stove-Gas, Washer, Window Coverings, Wine/Beverage Cooler, Wet Bar
Heating	Forced Air-1, Natural Gas
Fireplace	Yes
Fireplaces	Direct Vent
Stories	3
Has Basement	Yes
Basement	Full, Finished

Exterior

Exterior	Wood, Stucco
Exterior Features	Golf Nearby, No Through Road

Roof	Asphalt Shingles
Construction	Wood, Stucco
Foundation	Concrete Perimeter

Additional Information

Date Listed	May 28th, 2025
Days on Market	11
Zoning	Zone 58

DATA IS DEEMED RELIABLE BUT IS NOT GUARANTEED ACCURATE BY THE REALTORS® ASSOCIATION OF EDMONTON. COPYRIGHT 2025 BY THE REALTORS® ASSOCIATION OF EDMONTON. ALL RIGHTS RESERVED.Trademarks are owned or controlled by the Canadian Real Estate Association (CREA) and identify real estate professionals who are members of CREA (REALTOR®, REALTORS®) and/or the quality of services they provide (MLS®, Multiple Listing Service®)

Listing information last updated on June 7th, 2025 at 9:32pm MDT