

\$169,900 - 320 Clareview Station Drive, Edmonton

MLS® #E4438560

\$169,900

2 Bedroom, 2.00 Bathroom, 840 sqft

Condo / Townhouse on 0.00 Acres

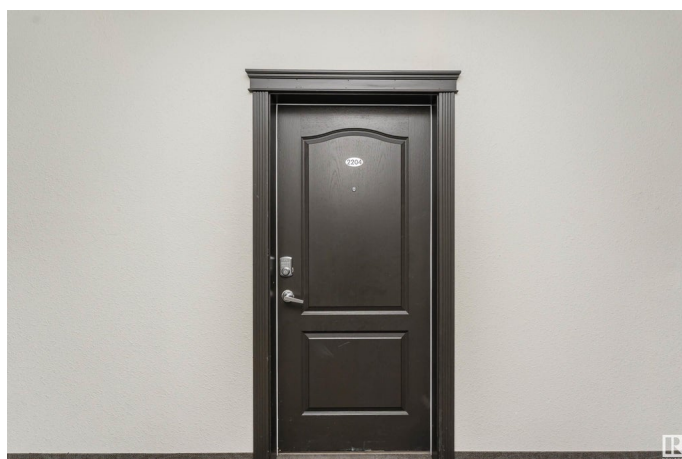
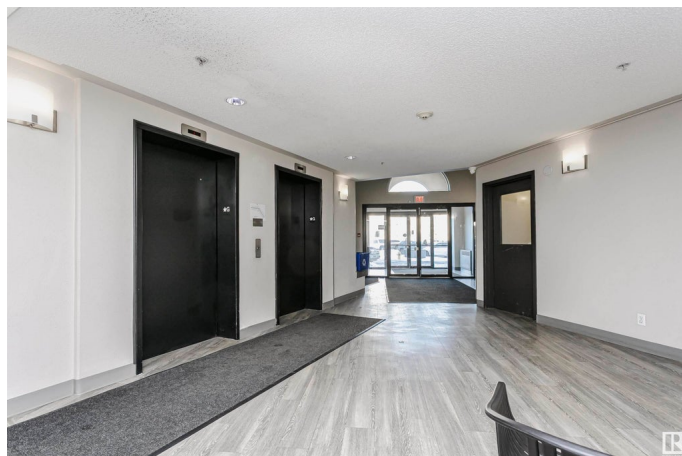
Clareview Town Centre, Edmonton, AB

Discover this well-maintained 840 sq ft, 2-bedroom, 2-bathroom condo in Clareview Town Centre community. This exquisite condo features an open concept kitchen with dark laminate countertops and classic white cabinetry with ample upper and lower storage. The bright and inviting living room opens onto a spacious balcony, ideal for relaxation and entertaining. The master bedroom boasts a walk-through closet leading to a 4-piece ensuite, while an additional bedroom and a 4-piece bathroom complete the living space. Enjoy the convenience of being close to schools, shopping, and all amenities, with easy access to the Henday and major transit.

Built in 2007

Essential Information

MLS® #	E4438560
Price	\$169,900
Bedrooms	2
Bathrooms	2.00
Full Baths	2
Square Footage	840
Acres	0.00
Year Built	2007
Type	Condo / Townhouse
Sub-Type	Lowrise Apartment



Style	Single Level Apartment
Status	Active

Community Information

Address	320 Clareview Station Drive
Area	Edmonton
Subdivision	Clareview Town Centre
City	Edmonton
County	ALBERTA
Province	AB
Postal Code	T5Y 0E5

Amenities

Amenities	Detectors Smoke, No Smoking Home, Security Door
Parking Spaces	2
Parking	2 Outdoor Stalls

Interior

Interior Features	ensuite bathroom
Appliances	Dishwasher-Built-In, Hood Fan, Refrigerator, Stacked Washer/Dryer, Stove-Electric, Window Coverings
Heating	Hot Water, Natural Gas
# of Stories	4
Stories	1
Has Basement	Yes
Basement	None, No Basement

Exterior

Exterior	Wood, Vinyl
Exterior Features	Playground Nearby, Schools, Shopping Nearby
Roof	Asphalt Shingles
Construction	Wood, Vinyl
Foundation	Concrete Perimeter

Additional Information

Date Listed	May 26th, 2025
Days on Market	19
Zoning	Zone 35
Condo Fee	\$442

DATA IS DEEMED RELIABLE BUT IS NOT GUARANTEED ACCURATE BY THE REALTORS® ASSOCIATION OF EDMONTON. COPYRIGHT 2025 BY THE REALTORS® ASSOCIATION OF EDMONTON. ALL RIGHTS RESERVED.Trademarks are owned or controlled by the Canadian Real Estate Association (CREA) and identify real estate professionals who are members of CREA (REALTOR®, REALTORS®) and/or the quality of services they provide (MLS®, Multiple Listing Service®)

Listing information last updated on June 14th, 2025 at 4:02am MDT