

\$599,900 - 16904 62 Street, Edmonton

MLS® #E4438280

\$599,900

5 Bedroom, 3.00 Bathroom, 2,605 sqft

Single Family on 0.00 Acres

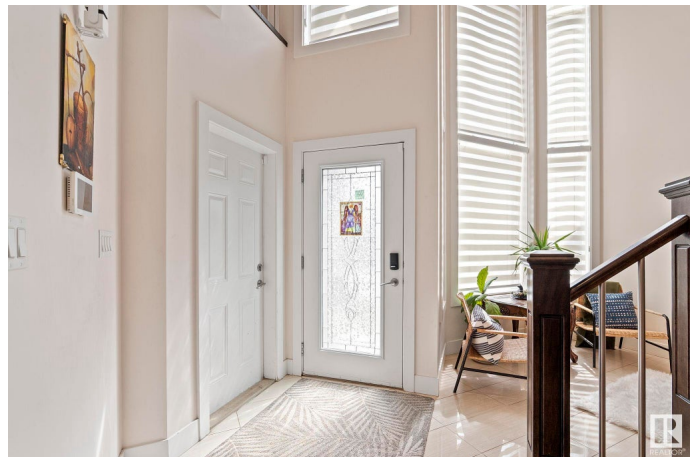
McConachie Area, Edmonton, AB

Gorgeous 2600sf 2 storey w/ basement side entrance. 5 BEDROOMS ABOVE GROUND! This beautiful home impresses right as you walk in the front door with soaring 18' ceilings - a full wall of windows & glossy tiles the whole main floor! Open concept at the back of the home with a gorgeous kitchen - dark cabinets, white granite counter & mosaic backsplash, a large granite island with stool seating & newer stainless steel appliances. There's a gas fireplace in the living room & the dining area opens up to the west-facing back yard. Main floor also features a bedroom & full bathroom with tub! There are 4 bedrooms upstairs, 2 full bathrooms, a laundry room & a loft area for an office or play area. The basement is unfinished, but the bathroom is roughed in, 9' ceilings & large windows will make for a great basement or future suite. Good sized yard & great location a block away from a K-6 school & a couple block walk to No Frills.

Built in 2014

Essential Information

MLS® #	E4438280
Price	\$599,900
Bedrooms	5
Bathrooms	3.00
Full Baths	3



Square Footage	2,605
Acres	0.00
Year Built	2014
Type	Single Family
Sub-Type	Detached Single Family
Style	2 Storey
Status	Active

Community Information

Address	16904 62 Street
Area	Edmonton
Subdivision	McConachie Area
City	Edmonton
County	ALBERTA
Province	AB
Postal Code	T5Y 3K4

Amenities

Amenities	Ceiling 9 ft., Closet Organizers, Deck, Hot Water Tankless, Vinyl Windows, Walk-up Basement
Parking	Double Garage Attached

Interior

Interior Features	ensuite bathroom
Appliances	Dishwasher-Built-In, Dryer, Refrigerator, Stove-Electric, Washer, Window Coverings
Heating	Forced Air-1, Natural Gas
Fireplace	Yes
Fireplaces	Tile Surround
Stories	2
Has Basement	Yes
Basement	Full, Unfinished

Exterior

Exterior	Wood, Stucco
Exterior Features	Fenced, Landscaped, Schools, Shopping Nearby
Roof	Asphalt Shingles
Construction	Wood, Stucco
Foundation	Concrete Perimeter

School Information

Elementary	Soraya Hafez
Middle	Steele Heights
High	ME Lazerte

Additional Information

Date Listed	May 23rd, 2025
Days on Market	22
Zoning	Zone 03

DATA IS DEEMED RELIABLE BUT IS NOT GUARANTEED ACCURATE BY THE REALTORS® ASSOCIATION OF EDMONTON. COPYRIGHT 2025 BY THE REALTORS® ASSOCIATION OF EDMONTON. ALL RIGHTS RESERVED.Trademarks are owned or controlled by the Canadian Real Estate Association (CREA) and identify real estate professionals who are members of CREA (REALTOR®, REALTORS®) and/or the quality of services they provide (MLS®, Multiple Listing Service®)

Listing information last updated on June 14th, 2025 at 5:47am MDT