

\$375,000 - 2 Aurea Bay, Spruce Grove

MLS® #E4437563

\$375,000

2 Bedroom, 2.50 Bathroom, 1,362 sqft

Single Family on 0.00 Acres

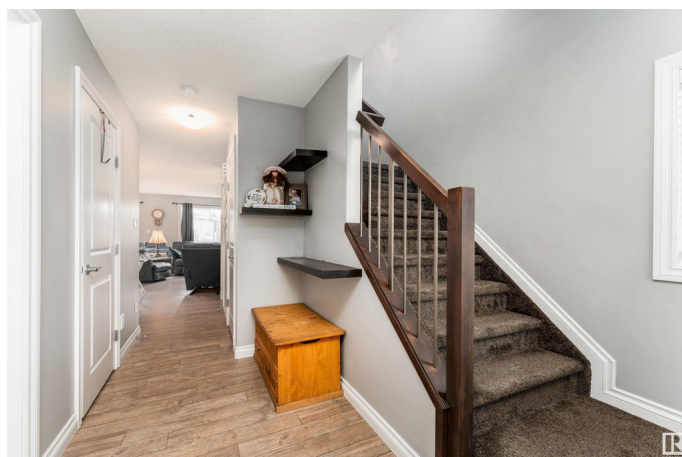
Aspen Glen, Spruce Grove, AB

Welcome to this beautifully maintained half duplex in the family-friendly community of Aspen Glen, Spruce Grove. This two-storey home features a bright and open main floor with a spacious living room, dining area, modern kitchen with granite countertops and pantry, plus a convenient 2-piece bathroom. Upstairs, you'll find a versatile bonus room, a primary bedroom with a 4-piece ensuite, and a second bedroom with its own walk-in closet. Another 4-piece bathroom completes the upper level. Enjoy the large deck, oversized single garage, and easy access to walking trails, a golf course, and major routes. This home offers both comfort and convenience in a prime location.

Built in 2015

Essential Information

| | |
|----------------|-----------|
| MLS® # | E4437563 |
| Price | \$375,000 |
| Bedrooms | 2 |
| Bathrooms | 2.50 |
| Full Baths | 2 |
| Half Baths | 1 |
| Square Footage | 1,362 |
| Acres | 0.00 |
| Year Built | 2015 |



| | |
|----------|---------------|
| Type | Single Family |
| Sub-Type | Half Duplex |
| Style | 2 Storey |
| Status | Active |

Community Information

| | |
|-------------|--------------|
| Address | 2 Aurea Bay |
| Area | Spruce Grove |
| Subdivision | Aspen Glen |
| City | Spruce Grove |
| County | ALBERTA |
| Province | AB |
| Postal Code | T7X 0V4 |

Amenities

| | |
|-----------|------------------------|
| Amenities | Deck |
| Parking | Single Garage Attached |

Interior

| | |
|-------------------|--|
| Interior Features | ensuite bathroom |
| Appliances | Dishwasher-Built-In, Dryer, Garage Control, Garage Opener, Microwave Hood Fan, Refrigerator, Stove-Electric, Vacuum System Attachments, Vacuum Systems, Washer |
| Heating | Forced Air-1, Natural Gas |
| Stories | 2 |
| Has Basement | Yes |
| Basement | Full, Unfinished |

Exterior

| | |
|-------------------|---|
| Exterior | Wood, Stone, Vinyl |
| Exterior Features | Cul-De-Sac, Golf Nearby, Landscaped, Playground Nearby, Schools |
| Roof | Asphalt Shingles |
| Construction | Wood, Stone, Vinyl |
| Foundation | Concrete Perimeter |

Additional Information

| | |
|----------------|----------------|
| Date Listed | May 21st, 2025 |
| Days on Market | 24 |
| Zoning | Zone 91 |

DATA IS DEEMED RELIABLE BUT IS NOT GUARANTEED ACCURATE BY THE REALTORS® ASSOCIATION OF EDMONTON. COPYRIGHT 2025 BY THE REALTORS® ASSOCIATION OF EDMONTON. ALL RIGHTS RESERVED. Trademarks are owned or controlled by the Canadian Real Estate Association (CREA) and identify real estate professionals who are members of CREA (REALTOR®, REALTORS®) and/or the quality of services they provide (MLS®, Multiple Listing Service®)

Listing information last updated on June 14th, 2025 at 6:17pm MDT