

\$410,000 - 10952 158 Street, Edmonton

MLS® #E4435918

\$410,000

5 Bedroom, 2.00 Bathroom, 912 sqft

Single Family on 0.00 Acres

Mayfield, Edmonton, AB

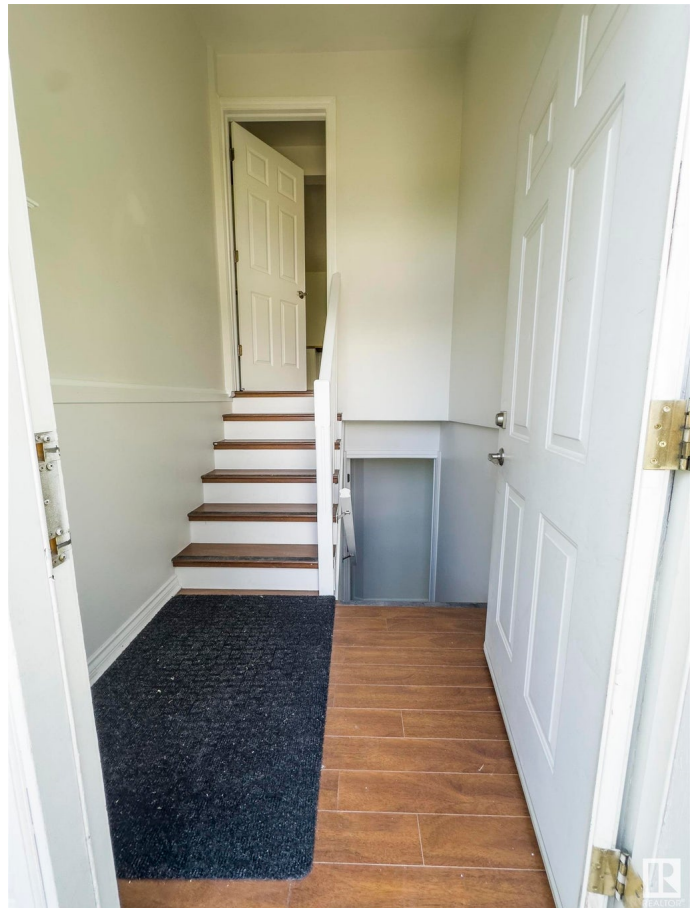
Discover this spacious & well-maintained raised bungalow located in the friendly community of Mayfield. Perfect for families, this home offers 5 bdrms & 2 bathrms, providing plenty of space for everyone. Property features two kitchens & two laundry areas, making it ideal for multi-generational living or entertaining guests. Recent upgrades include new shingles & hot water tank, ensuring peace of mind for years to come. Fully fenced yard, offering a safe space for pets & outdoor enjoyment. Gravel parking at the back provides convenient off-street parking options. Enjoy outdoor living on the large deck, complete w/ under-deck storage & natural gas line for your BBQ. Situated one block from Mayfield Elementary & Our Lady of Peace Catholic School, this home is perfectly positioned for families seeking a convenient and community-oriented neighborhood. Family-friendly neighbors & walking proximity to schools, neighborhood shops, pubs, short drive to mayfield common & WEM, make this excellent place to call home!

Built in 1965

Essential Information

MLS® # E4435918

Price \$410,000



Bedrooms	5
Bathrooms	2.00
Full Baths	2
Square Footage	912
Acres	0.00
Year Built	1965
Type	Single Family
Sub-Type	Detached Single Family
Style	Bi-Level
Status	Active

Community Information

Address	10952 158 Street
Area	Edmonton
Subdivision	Mayfield
City	Edmonton
County	ALBERTA
Province	AB
Postal Code	T5P 2Y9

Amenities

Amenities	Deck, Detectors Smoke, Dog Run-Fenced In, Exterior Walls- 2"x6"
Parking	2 Outdoor Stalls, No Garage

Interior

Appliances	Dishwasher-Built-In, Dryer, Hood Fan, Microwave Hood Fan, Oven-Microwave, Refrigerator, Storage Shed, Stove-Electric, Stove-Gas, Washer, Window Coverings
Heating	Forced Air-1, Natural Gas
Stories	2
Has Basement	Yes
Basement	Full, Finished

Exterior

Exterior	Wood, Vinyl
Exterior Features	Back Lane, Fenced, Schools
Lot Description	36.64X15.24
Roof	Asphalt Shingles
Construction	Wood, Vinyl

Foundation Concrete Perimeter

Additional Information

Date Listed May 12th, 2025

Days on Market 34

Zoning Zone 21



DATA IS DEEMED RELIABLE BUT IS NOT GUARANTEED ACCURATE BY THE REALTORS® ASSOCIATION OF EDMONTON. COPYRIGHT 2025 BY THE REALTORS® ASSOCIATION OF EDMONTON. ALL RIGHTS RESERVED.Trademarks are owned or controlled by the Canadian Real Estate Association (CREA) and identify real estate professionals who are members of CREA (REALTOR®, REALTORS®) and/or the quality of services they provide (MLS®, Multiple Listing Service®)

Listing information last updated on June 15th, 2025 at 8:47am MDT