

\$164,900 - 105 4404 122 Street, Edmonton

MLS® #E4431279

\$164,900

2 Bedroom, 1.50 Bathroom, 1,128 sqft

Condo / Townhouse on 0.00 Acres

Aspen Gardens, Edmonton, AB

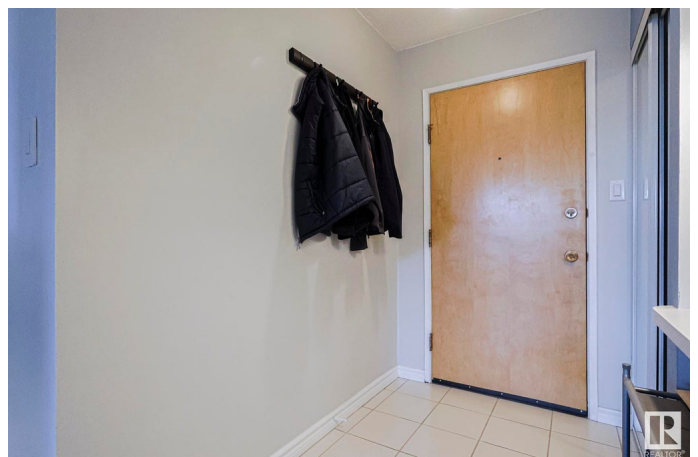
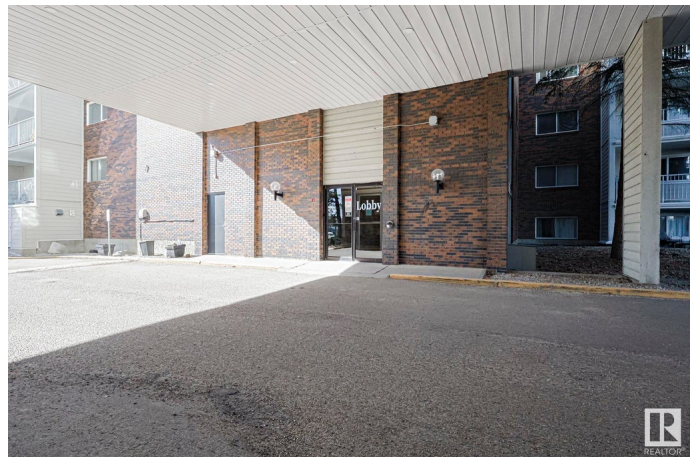
Located in the desired community of ASPEN GARDENS! This condo exhibits upgrades including VINYL PLANK, light fixtures, cabinetry, modernized kitchen and bathrooms! Upon entry, you come to a spacious living room with adjacent dining area and a kitchen featuring STAINLESS STEEL appliances and beautiful cabinetry. The large master bedroom features ENSUITE bathroom and large closet area. There is an additional bedroom and full bathroom. Being inlaid in the ground this unit is kept cool in the summers! Enjoy the large patio featuring privacy with trees and fence with direct access to your dedicated 2-CAR TANDEM parking stall. Makes it very easy to unload your shopping from your car directly into your unit! The condo fees include ELECTRICITY, HEAT and WATER. This unit has easy access and close proximity to all the amenities including FITNESS ROOM, SWIMMING POOL, HOT TUB and a large outdoor deck. Close to all amenities including shopping, restaurants, schools, public transportation, LRT, RAVINE, and WHITEMUD!

Built in 1976

Essential Information

MLS® # E4431279

Price \$164,900



Bedrooms	2
Bathrooms	1.50
Full Baths	1
Half Baths	1
Square Footage	1,128
Acres	0.00
Year Built	1976
Type	Condo / Townhouse
Sub-Type	Lowrise Apartment
Style	Single Level Apartment
Status	Active

Community Information

Address	105 4404 122 Street
Area	Edmonton
Subdivision	Aspen Gardens
City	Edmonton
County	ALBERTA
Province	AB
Postal Code	T6J 4A9

Amenities

Amenities	Exercise Room, Intercom, Parking-Visitor, Recreation Room/Centre, Security Door, See Remarks
Parking	Stall, Tandem

Interior

Interior Features	ensuite bathroom
Appliances	Dishwasher-Built-In, Dryer, Oven-Microwave, Refrigerator, Stove-Electric, Washer
Heating	Baseboard, Water
# of Stories	4
Stories	1
Has Basement	Yes
Basement	None, No Basement

Exterior

Exterior	Concrete, Brick
Exterior Features	Golf Nearby, Playground Nearby, Public Transportation, Schools,

	Shopping Nearby, See Remarks
Roof	Tar & Gravel
Construction	Concrete, Brick
Foundation	Concrete Perimeter

Additional Information

Date Listed	April 17th, 2025
Days on Market	12
Zoning	Zone 16
Condo Fee	\$790

DATA IS DEEMED RELIABLE BUT IS NOT GUARANTEED ACCURATE BY THE REALTORS® ASSOCIATION OF EDMONTON. COPYRIGHT 2025 BY THE REALTORS® ASSOCIATION OF EDMONTON. ALL RIGHTS RESERVED. Trademarks are owned or controlled by the Canadian Real Estate Association (CREA) and identify real estate professionals who are members of CREA (REALTOR®, REALTORS®) and/or the quality of services they provide (MLS®, Multiple Listing Service®)

Listing information last updated on April 29th, 2025 at 10:02am MDT