

\$599,900 - 9404 173 Street, Edmonton

MLS® #E4428659

\$599,900

4 Bedroom, 2.50 Bathroom, 1,935 sqft
Single Family on 0.00 Acres

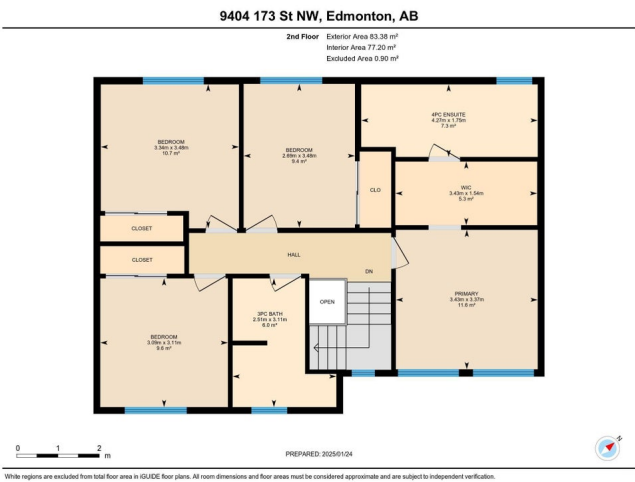
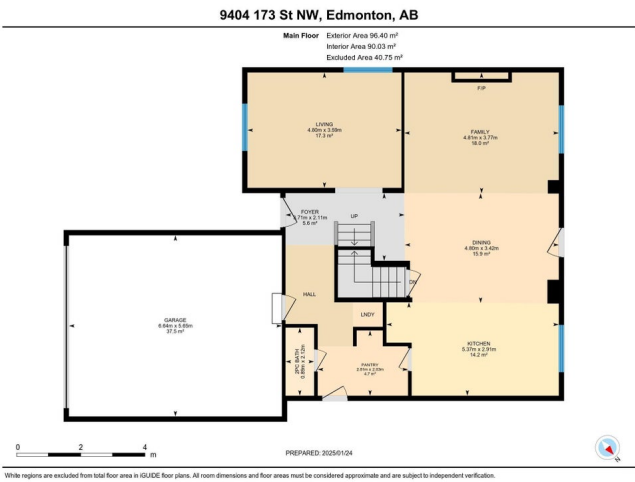
Summerlea, Edmonton, AB

This two-storey home is located in the desirable community of Summerlea. It offers 1935 sq ft of above-grade living space, featuring 4 bedrooms plus main floor flex room, 2.5 bathrooms, and a double attached garage. Brand New siding, garage over-head door, all windows, doors, plumbing pipes, water tank. As you enter the foyer, you'll immediately feel at home. The open-concept living and dining area is bright and spacious, featuring a cozy gas fireplace. The kitchen is equipped with conveniences, a kitchen island, and a large pantry, perfect for hosting family dinners or casual gatherings. A powder room and a laundry complete the main floor. Upstairs, you'll find a master bedroom with a walk-through closet and a 4-piece ensuite. Additionally, there are 3 other generously sized bedrooms and a 3-piece bathroom on the upper level. The unfinished basement offers endless possibilities for customization. Walking distance to the West Edmonton Mall and major street.

Built in 1980

Essential Information

MLS® #	E4428659
Price	\$599,900
Bedrooms	4



Bathrooms	2.50
Full Baths	2
Half Baths	1
Square Footage	1,935
Acres	0.00
Year Built	1980
Type	Single Family
Sub-Type	Detached Single Family
Style	2 Storey
Status	Active

Community Information

Address	9404 173 Street
Area	Edmonton
Subdivision	Summerlea
City	Edmonton
County	ALBERTA
Province	AB
Postal Code	T5T 3K8

Amenities

Amenities	Detectors Smoke, No Smoking Home
Parking	Double Garage Attached

Interior

Interior Features	ensuite bathroom
Appliances	Dishwasher-Built-In, Dryer, Hood Fan, Oven-Built-In, Refrigerator, Stove-Countertop Electric, Washer
Heating	Forced Air-2, Natural Gas
Stories	2
Has Basement	Yes
Basement	Full, Unfinished

Exterior

Exterior	Wood, Brick, Vinyl
Exterior Features	Corner Lot, Fenced, Golf Nearby, Landscaped, Playground Nearby, Public Transportation, Schools, Shopping Nearby
Roof	Asphalt Shingles
Construction	Wood, Brick, Vinyl

Foundation Concrete Perimeter

Additional Information

Date Listed April 2nd, 2025

Days on Market 24

Zoning Zone 20

DATA IS DEEMED RELIABLE BUT IS NOT GUARANTEED ACCURATE BY THE REALTORS® ASSOCIATION OF EDMONTON. COPYRIGHT 2025 BY THE REALTORS® ASSOCIATION OF EDMONTON. ALL RIGHTS RESERVED.Trademarks are owned or controlled by the Canadian Real Estate Association (CREA) and identify real estate professionals who are members of CREA (REALTOR®, REALTORS®) and/or the quality of services they provide (MLS®, Multiple Listing Service®)

Listing information last updated on April 26th, 2025 at 1:17am MDT