

\$279,900 - 111 1506 Tamarack Boulevard, Edmonton

MLS® #E4428200

\$279,900

2 Bedroom, 2.00 Bathroom, 936 sqft

Condo / Townhouse on 0.00 Acres

Tamarack, Edmonton, AB

In the heart of the South East, ALOFT TAMARACK is centrally located and close to all of the essentials - shopping, schools, entertainment, the Henday and Whitemud.

Tons of amenities here, plus it's one of the only condos that features a ROOFTOP PATIO!

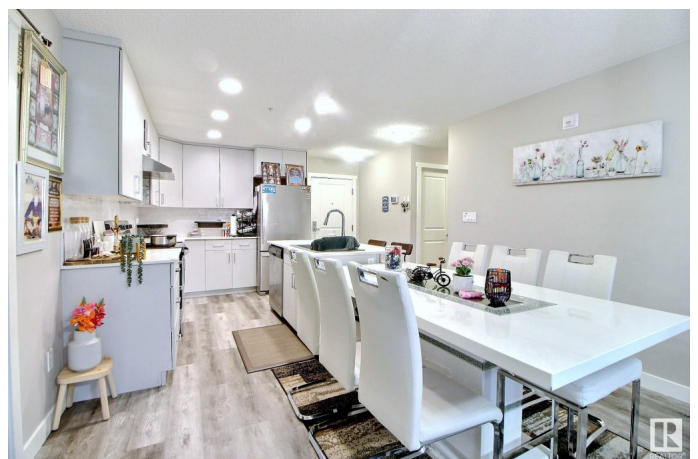
Well-designed, this unit has 2 Bedrooms + 1 Den and 2 Full Bathrooms. A wide open layout with a stunning kitchen featuring an abundance of cabinet space, ss appliances and quartz countertops. Your kitchen overlooks the large living room area where you can step onto your private patio, perfect for bbqs and relaxation. In addition to two large bedrooms, this unit also has a den, perfect for your home office or flex space to create your own. Two titled parking spots, including one in the heated underground and one outdoor stall.

There are so many amenities here, like in-unit laundry, a fenced dog run, vegetable and flower garden beds for owners to use and a rooftop patio! You won't want to miss this!

Built in 2019

Essential Information

MLS® #	E4428200
Price	\$279,900
Bedrooms	2
Bathrooms	2.00



Full Baths	2
Square Footage	936
Acres	0.00
Year Built	2019
Type	Condo / Townhouse
Sub-Type	Lowrise Apartment
Style	Single Level Apartment
Status	Active

Community Information

Address	111 1506 Tamarack Boulevard
Area	Edmonton
Subdivision	Tamarack
City	Edmonton
County	ALBERTA
Province	AB
Postal Code	T6T 2J5

Amenities

Amenities	No Smoking Home, Parking-Visitor, Patio, Rooftop Deck/Patio
Parking Spaces	2
Parking	Stall, Underground

Interior

Interior Features	ensuite bathroom
Appliances	Dishwasher-Built-In, Dryer, Microwave Hood Fan, Refrigerator, Stove-Electric, Washer, Window Coverings
Heating	Hot Water, Natural Gas
# of Stories	4
Stories	4
Has Basement	Yes
Basement	None, No Basement

Exterior

Exterior	Wood, Stone, Vinyl
Exterior Features	Airport Nearby, Golf Nearby, Landscaped, Playground Nearby, Public Transportation, Schools, Shopping Nearby, See Remarks
Roof	See Remarks
Construction	Wood, Stone, Vinyl

Foundation Concrete Perimeter

School Information

Elementary Jackson Heights Elem
Middle Thelma Chalifoux Jr High
High Dr. Francis Whiskeyjack

Additional Information

Date Listed March 29th, 2025
Days on Market 31
Zoning Zone 30
Condo Fee \$611

DATA IS DEEMED RELIABLE BUT IS NOT GUARANTEED ACCURATE BY THE REALTORS® ASSOCIATION OF EDMONTON. COPYRIGHT 2025 BY THE REALTORS® ASSOCIATION OF EDMONTON. ALL RIGHTS RESERVED.Trademarks are owned or controlled by the Canadian Real Estate Association (CREA) and identify real estate professionals who are members of CREA (REALTOR®, REALTORS®) and/or the quality of services they provide (MLS®, Multiple Listing Service®)
Listing information last updated on April 29th, 2025 at 1:47pm MDT